

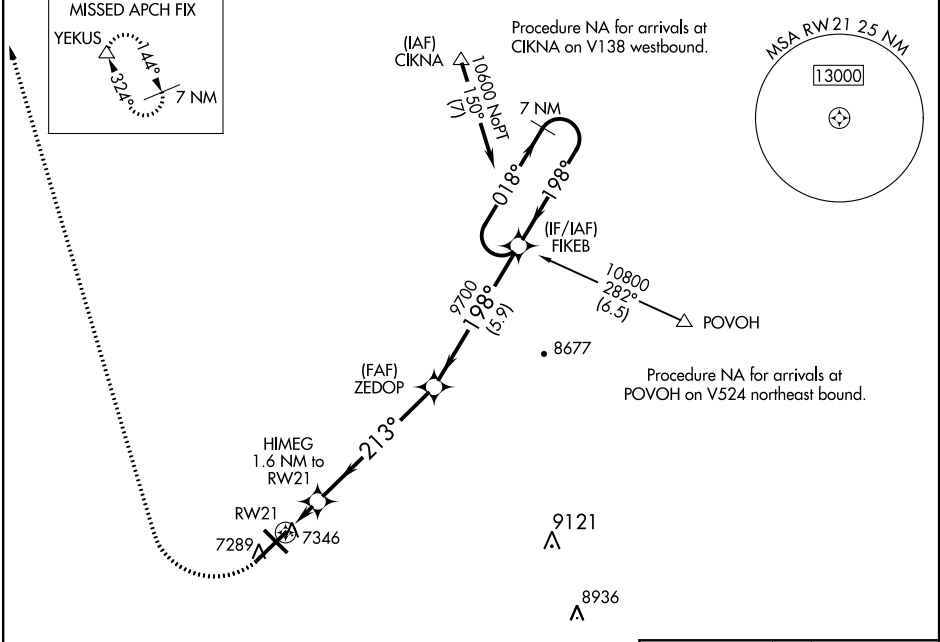
RNAV (GPS) RWY 21

LARAMIE RGNL (L.A.R.)

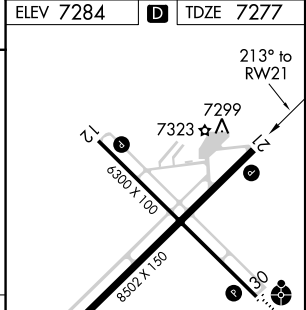
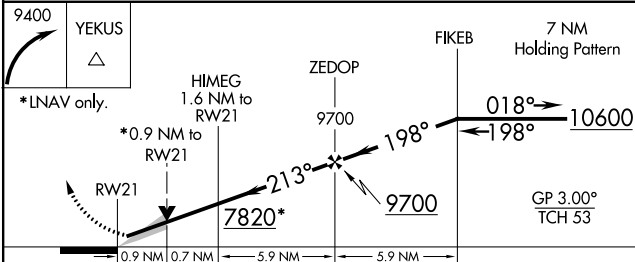
WAAS CH 72825 W21A	APP CRS 213°	Rwy Idg TDZE Apt Elev	8502 7277 7284
--	------------------------	-----------------------------	---

<p>-35°C</p>	<p>Circling to Rwy 30 NA at night. Baro-VNAV NA. DME/DME RNP-0.3 NA.</p>	<p>MISSED APPROACH: Climbing right turn to 9400 direct YEKUS and hold.</p>
--------------	--	--

ASOS 135.475	DENVER CENTER 125.9 284.7	UNICOM 123.05 (CTAF)
------------------------	-------------------------------------	--------------------------------



ELEV 7284		TDZE 7277
-----------	--	-----------



CATEGORY	A	B	C	D
LPV DA		7527-3/4	250 (300-3/4)	
LNAV/VNAV DA		7527-3/4	250 (300-3/4)	
LNAV MDA		7600-1	323 (400-1)	
CIRCLING	7660-1 376 (400-1)	7740-1 456 (500-1)	7740-1 1/2 456 (500-1 1/2)	7840-2 556 (500-2)

REIL Rwy 3, 12 and 21

MIRL Rwy 3-21 and 12-30

NW-1, 07 DEC 2017 to 04 JAN 2018

NW-1, 07 DEC 2017 to 04 JAN 2018