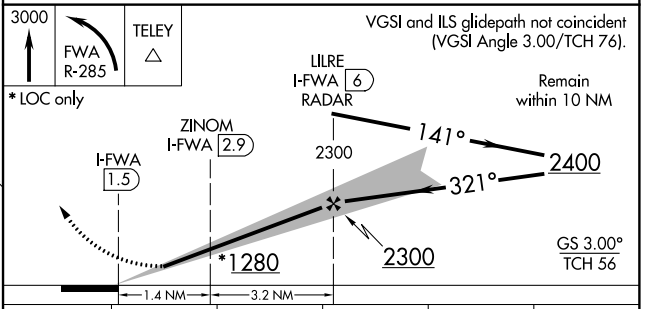
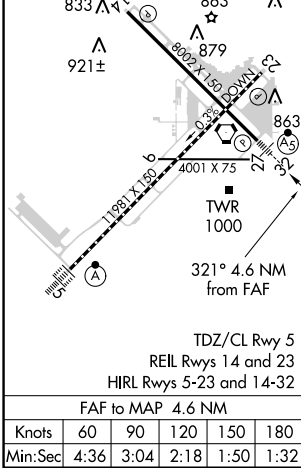
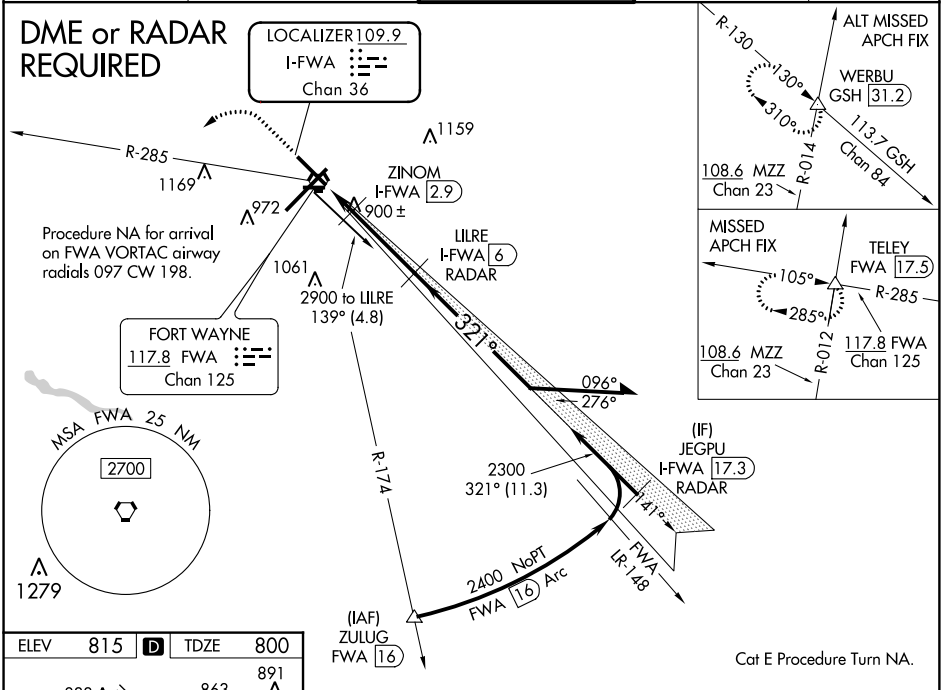


LOC/DME I-FWA 109.9 Chan 36	APP CRS 321°	Rwy Idg TDZE Apt Elev	8001 800 815
--	------------------------	-----------------------------	---

ILS or LOC RWY 32

FORT WAYNE INTL (FWA)

▲ ASR	DME required. For inop ALS, increase S-ILS 32 Cat E visibility to RVR 4000, S-LOC 32 Cat E visibility to RVR 6000. Use I-FWA DME when on the localizer course. # RVR 1800 authorized with use of FD or AP or HUD to DA.	MALSR 	MISSED APPROACH: Climb to 3000 then left turn on FWA VORTAC R-285 to TELEY INTL/FWA 17.5 DME and hold.	
ATIS 121.25 349.0	FORT WAYNE APP CON 127.2 284.6	FORT WAYNE TOWER 119.1 269.325	GND CON 121.9 348.6	CLNC DEL 124.75



CATEGORY	A	B	C	D	E
S-ILS 32	# 1000/24 200 (200-½)				
S-LOC 32	1160/24	360 (400-½)	1160/40 360 (400-¾)		
C CIRCLING	1300-1	485 (500-1)	1420-1¾ 605 (700-1¾)	1520-2¼ 705 (800-2¼)	1520-2½ 705 (800-2½)

EC-2, 07 DEC 2017 to 04 JAN 2018

EC-2, 07 DEC 2017 to 04 JAN 2018