

VOR/DME VNY 113.1 Chan 78	APP CRS 046°	Rwy Idg TDZE Apt Elev 1003	N/A N/A 1003
---	------------------------	--	--------------------

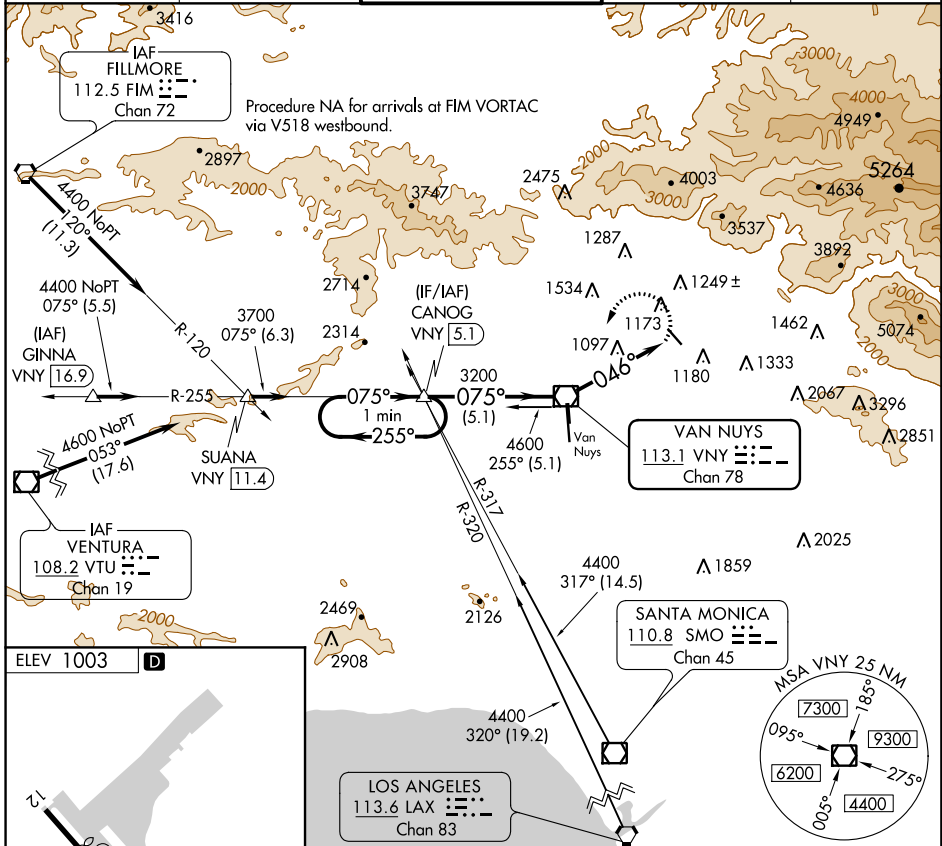
VOR-A

WHITEMAN (WHP)

⚠ When control tower closed, use Burbank altimeter setting.

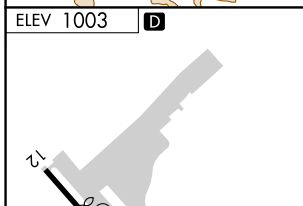
⚠ MISSED APPROACH: Climbing left turn to 3700 direct VNY VOR/DME then via VNY VOR/DME R-255 to CANOG INT/ VNY 5.1 DME and hold.

ATIS 132.1	SOCAL APP CON 134.2 338.2	WHITEMAN TOWER * 135.0 (CTAF)	GND CON 125.0	UNICOM 122.95
----------------------	-------------------------------------	---	-------------------------	-------------------------

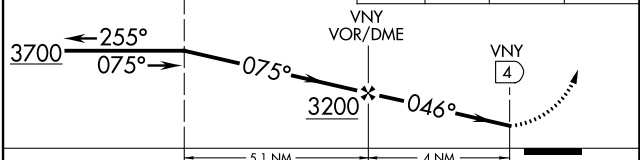


SW-3, 09 NOV 2017 to 07 DEC 2017

SW-3, 09 NOV 2017 to 07 DEC 2017



One Minute Holding Pattern	CANOG INT VNY 5.1	3700 VNY	VNY R-255	CANOG
----------------------------	-------------------	----------	-----------	-------



FAF to MAP 4 NM					
Knots	60	90	120	150	180
Min:Sec	4:00	2:40	2:00	1:36	1:20

CATEGORY	A	B	C	D
CIRCLING	1840-1 837 (900-1)	1840-1¼ 837 (900-1¼)	1840-2½ 837 (900-2½)	NA