

WAAS CH <b>90306</b> <b>W01A</b>	APP CRS <b>014°</b>	Rwy Idg TDZE Apt Elev	<b>6449</b> <b>1049</b> <b>1071</b>
--	------------------------	-----------------------------	---

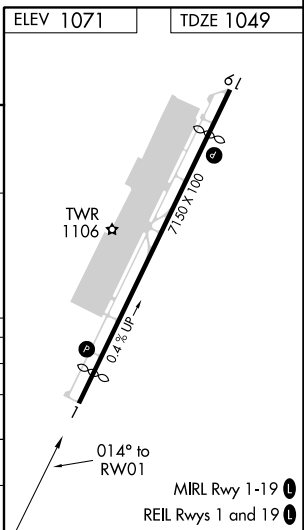
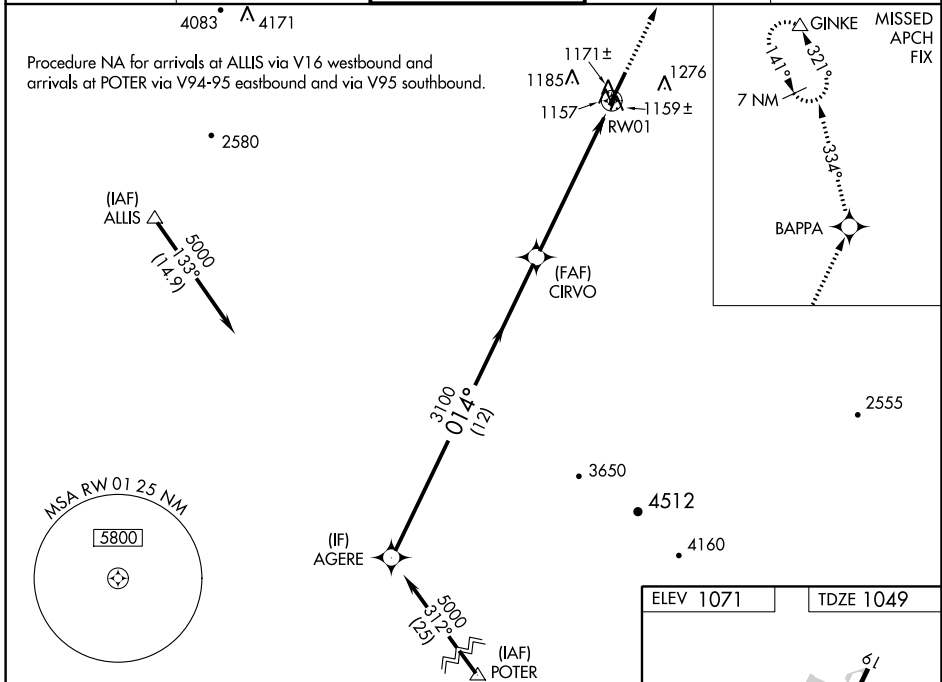
# RNAV (GPS) RWY 1

GLENDALE MUNI (GEU)

**⚠** Circling not authorized west of Rwy 1-19. DME/DME RNP-0.3 NA. Baro-VNAV NA when using Phoenix Sky Harbor Intl altimeter setting. For uncompensated Baro-VNAV systems, LNAV/VNAV NA below -17°C (2°F) or above 47°C (117°F). When local altimeter setting not received, use Phoenix Sky Harbor Intl altimeter setting and increase all DA/MDAs 60 feet, and increase LNAV/VNAV all Cats visibility ¼ mile and LNAV Cat C and D and Circling Cat C visibility ¼ mile. Night landing: Rwy 1, Cat C and D operational VGSI required, remain on or above VGSI glidepath until threshold.

**⚠** MISSED APPROACH: Climb to 10000 direct BAPPA and via 334° track to GINKE and hold, continue climb-in-hold to 10000.

ATIS <b>119.425</b>	LUKE APP CON * <b>118.15 363.125</b>	GLENDALE TOWER * <b>121.0 (CTAF) 0</b>	GND CON <b>118.0</b>	UNICOM <b>122.95</b>
------------------------	---	---	-------------------------	-------------------------



AGERE	Procedure Turn NA		10000	BAPPA	334° tr	GINKE
5000	CIRVO		↑	✧		△
GP 3.00° TCH 40	RWY 01					
	12 NM		6.2 NM			
CATEGORY	A	B	C	D		
LPV DA	1378-1¼		329 (400-1¼)			
LNAV/VNAV DA	1457-1½		408 (400-1½)			
LNAV MDA	1440-1		391 (400-1)		1440-1¼	391 (400-1¼)
CIRCLING	1520-1 449 (500-1)	1660-1 589 (600-1)	1660-1½ 589 (600-1½)	1660-2 589 (600-2)		

SW-4, 09 NOV 2017 to 07 DEC 2017

SW-4, 09 NOV 2017 to 07 DEC 2017