

SW-4, 09 NOV 2017 to 07 DEC 2017

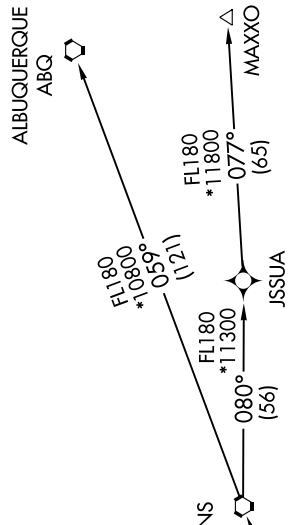
TAKEOFF OBSTACLE NOTES

ATIS 119.425
GND CON 118.0
GLENDALE TOWER * 121.0
LUKE DEP CON * 118.15 363.125
PHOENIX DEP CON 120.7 239.0

NOTE: RNAV 1.
NOTE: Turbojets and turboprops only.
NOTE: RADAR required.
NOTE: GPS required.
NOTE: SJN TRANSITION for ABQ terminal arrivals only.
NOTE: MAXXO TRANSITION ATC assigned only.
NOTE: Aircraft filing over DEN, RSK, ALS, and points north of ALS, file YOTES DEPARTURE.
NOTE: Aircraft filing over ABQ, CIM, FTI, and GCK, file LALUZ DEPARTURE.
NOTE: Aircraft filing over ACH, IBL, ONM, CNX, PNH, MMB, TCC, IRW and TXO, file FTHLS DEPARTURE.
NOTE: Aircraft departing KGEU and KGYR ATC assigned only.

**TOP ALTITUDE:
ASSIGNED BY ATC**

Rwy 1: Light on blast fence 4' from DER, 130' left of centerline, up to 10' AGL/1088' MSL.
Trees beginning 124' from DER, left and right of centerline, up to 30' AGL/1104' MSL.
Trees beginning 299' from DER, 80' right of centerline, up to 15' AGL/1091' MSL.
Poles and trees beginning 400' from DER, 197' right of centerline, up to 75' AGL/1144' MSL.
Rwy 19: Trees beginning 281' from DER, 331' left of centerline, up to 33' AGL/1060' MSL.

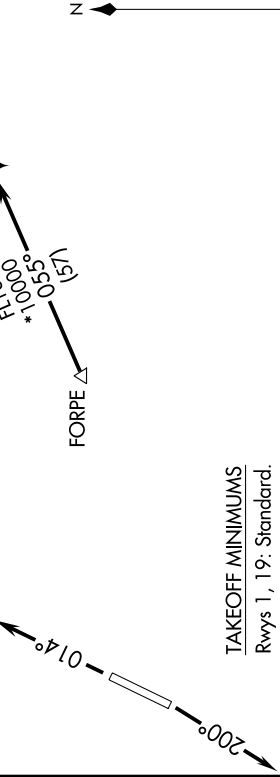


DEPARTURE ROUTE DESCRIPTION

TAKEOFF RUNWAY 1: Climb heading 014° or as assigned by ATC, thence . . .
TAKEOFF RUNWAY 19: Climb heading 200° or as assigned by ATC, thence . . .

. . . expect RADAR vectors to FORPE, then on track 055° to LALUZ. Then on (transition), expect filed altitude 3 minutes after departure.

ALBUQUERQUE TRANSITION (LALUZ5.ABQ)
MAXXO TRANSITION (LALUZ5.MAXXO)
ST JOHNS TRANSITION (LALUZ5.SJN)



TAKEOFF MINIMUMS
Rwys 1, 19: Standard.

NOTE: Chart not to scale.

SW-4, 09 NOV 2017 to 07 DEC 2017