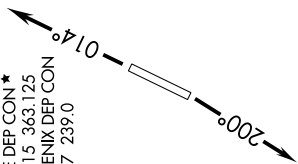


SW-4, 09 NOV 2017 to 07 DEC 2017

**TOP ALTITUDE:
ASSIGNED BY ATC**

ATIS 119.425
GND CON 118.0
GLENDALE TOWER * 121.0
LUKE DEP CON * 118.15 363.125
PHOENIX DEP CON 120.7 239.0

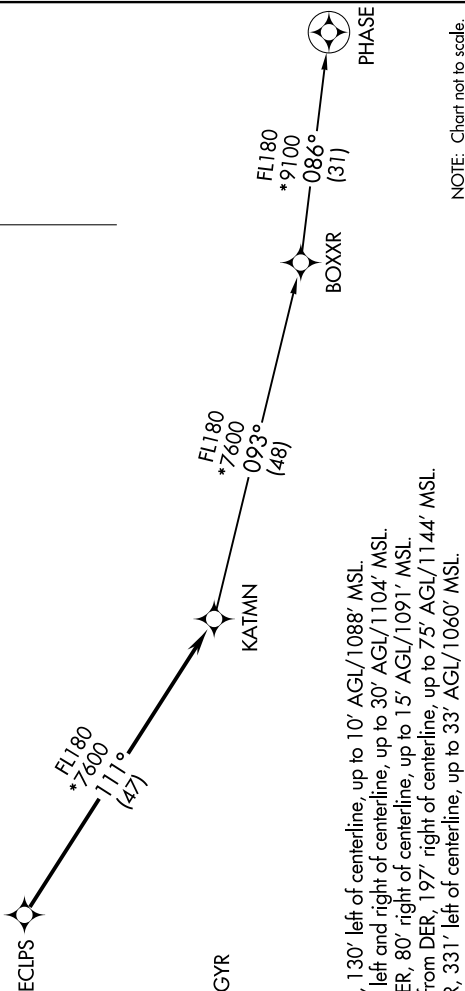


DEPARTURE ROUTE DESCRIPTION

TAKEOFF RUNWAY 1: Climb heading 014° or as assigned by ATC, thence. . . .
TAKEOFF RUNWAY 19: Climb heading 200° or as assigned by ATC, thence. . . .
. . . . expect RADAR vectors to ECLPS, then on track 111° to KATMN. Then on (transition), expect filed altitude 3 minutes after departure.

PHASE TRANSITION (KATMN5.PHASE)

TAKEOFF MINIMUMS
Rwys 1, 19: Standard.



- NOTE: RNAV 1.
- NOTE: Turbojets and turboprops only.
- NOTE: RADAR required.
- NOTE: GPS required.
- NOTE: Aircraft departing KGEU and KGYR ATC assigned only.

TAKEOFF OBSTACLE NOTES

Rwy 1: Light on blast fence 4' from DER, 130' left of centerline, up to 10' AGL/1088' MSL.
Trees beginning 124' from DER, left and right of centerline, up to 30' AGL/1104' MSL.
Vehicles beginning 299' from DER, 80' right of centerline, up to 15' AGL/1091' MSL.
Poles and trees beginning 400' from DER, 197' right of centerline, up to 75' AGL/1144' MSL.
Rwy 19: Trees beginning 281' from DER, 331' left of centerline, up to 33' AGL/1060' MSL.

NOTE: Chart not to scale.

SW-4, 09 NOV 2017 to 07 DEC 2017