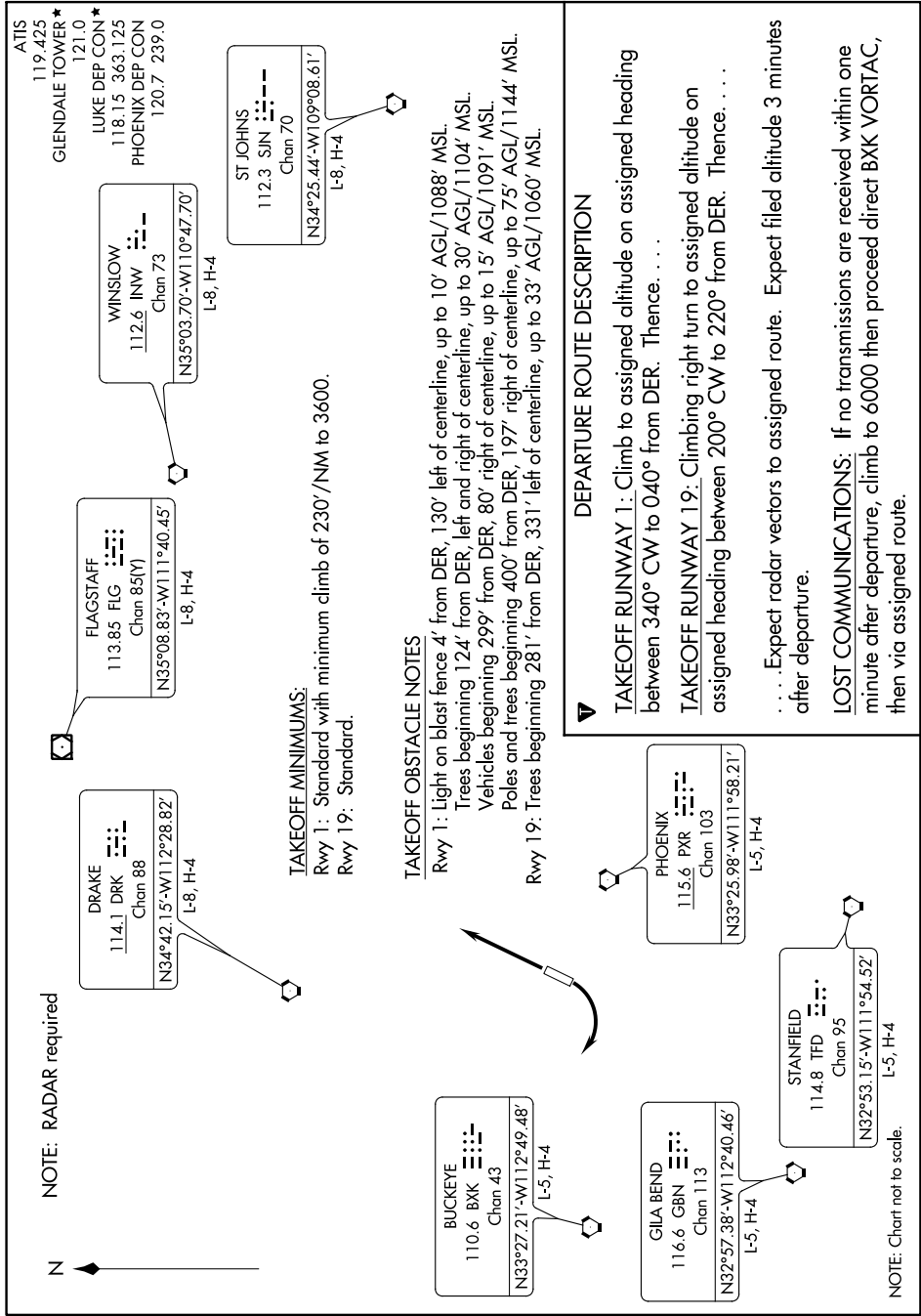


GLENDALE ONE DEPARTURE

SL-6915 (FAA)

GLENDALE MUNI (G^{ET}U)
GLENDALE, ARIZONA

SW-4 of 07 DEC 2017 to 07 DEC 2017



ATIS
119.425
GLENDALE TOWER ★
121.0
LUKE DEP CON ★
118.15 363.125
PHOENIX DEP CON
120.7 239.0

ST JOHNS
112.3 SJN
Chan 70
N34°25.44'W109°08.61'
L-8, H-4

WINSLOW
112.6 INW
Chan 73
N35°03.70'W110°47.70'
L-8, H-4

FLAGSTAFF
113.85 FLG
Chan 85[V]
N35°08.83'W111°40.45'
L-8, H-4

DRAKE
114.1 DRK
Chan 88
N34°42.15'W112°28.82'
L-8, H-4

TAKEOFF MINIMUMS:
Rwy 1: Standard with minimum climb of 230' /NM to 3600.
Rwy 19: Standard.

TAKEOFF OBSTACLE NOTES
Rwy 1: Light on blast fence 4' from DER, 130' left of centerline, up to 10' AGL/1088' MSL.
Trees beginning 124' from DER, left and right of centerline, up to 30' AGL/1104' MSL.
Vehicles beginning 299' from DER, 80' right of centerline, up to 15' AGL/1091' MSL.
Poles and trees beginning 400' from DER, 197' right of centerline, up to 75' AGL/1144' MSL.
Rwy 19: Trees beginning 281' from DER, 331' left of centerline, up to 33' AGL/1060' MSL.

DEPARTURE ROUTE DESCRIPTION

TAKEOFF RUNWAY 1: Climb to assigned altitude on assigned heading between 340° CW to 040° from DER. Thence. . . .
TAKEOFF RUNWAY 19: Climbing right turn to assigned altitude on assigned heading between 200° CW to 220° from DER. Thence. . . .

. . . . Expect radar vectors to assigned route. Expect filed altitude 3 minutes after departure.
LOSS OF COMMUNICATIONS: If no transmissions are received within one minute after departure, climb to 6000 then proceed direct BXX VORTAC, then via assigned route.

PHOENIX
115.6 PXR
Chan 103
N33°25.98'W111°58.21'
L-5, H-4

BUCKEYE
110.6 BXX
Chan 43
N33°27.21'W112°49.48'
L-5, H-4

GILA BEND
116.6 GBN
Chan 113
N32°57.38'W112°40.46'
L-5, H-4

STANFIELD
114.8 TFD
Chan 95
N32°53.15'W111°54.52'
L-5, H-4

NOTE: Chart not to scale.

GLENDALE ONE DEPARTURE

GLENDALE, ARIZONA
GLENDALE MUNI (G^{ET}U)

SW-4, 09 NOV 2017 to 07 DEC 2017