

SW-4, 09 NOV 2017 to 07 DEC 2017

ATIS 119.425
GND CON 118.0
GLENDALE TOWER * 121.0
LUKE DEP CON * 118.15 363.125
PHOENIX DEP CON 120.7 239.0

NOTE: RNAV 1.

NOTE: Turbojets and turboprops only.

NOTE: RADAR required.

NOTE: GPS required.

NOTE: ABQ transition ATC assigned only.

NOTE: Aircraft filing over ACH, LBL, ONM, CNX, PNH, MMB, TCC, IRW and TXO file FTHLS DEPARTURE.

NOTE: Aircraft filing over ABQ, CIM, FTI, and GCK file LALUZ DEPARTURE.

NOTE: Aircraft filing over DEN, RSK, ALS, and points north of ALS file YOTES DEPARTURE.

NOTE: For non-GPS equipped aircraft, PXR and TFD DMEs must be operational.

NOTE: Aircraft departing KGEU and KGYR ATC assigned only.

TAKEOFF OBSTACLE NOTES

Rwy 1: Light on blast fence 4' from DER, 130' left of centerline, up to 10' AGL/1088' MSL.

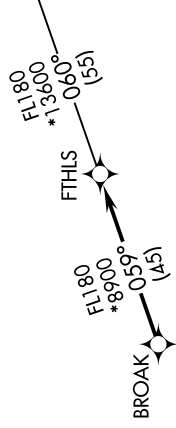
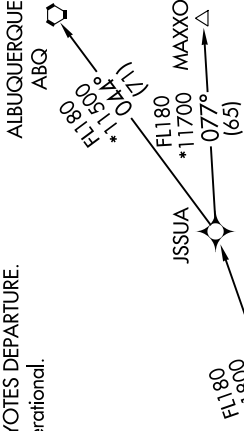
Trees beginning 124' from DER, left and right of centerline, up to 30' AGL/1104' MSL.

Vehicles beginning 299' from DER, 80' right of centerline, up to 15' AGL/1091' MSL.

Poles and trees beginning 400' from DER, 197' right of centerline, up to 75' AGL/1144' MSL.

Rwy 19: Trees beginning 281' from DER, 331' left of centerline, up to 33' AGL/1060' MSL.

**TOP ALTITUDE:
ASSIGNED BY ATC**



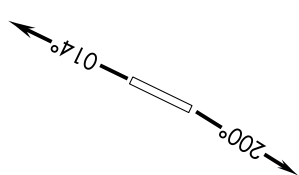
DEPARTURE ROUTE DESCRIPTION

TAKEOFF RUNWAY 1: Climb heading 014° or as assigned by ATC, thence
TAKEOFF RUNWAY 19: Climb heading 200° or as assigned by ATC, thence

. . . . expect RADAR vectors to BROAK, then on track 059° to FTHLS. Then on (transition), expect filed altitude 3 minutes after departure.

ALBUQUERQUE TRANSITION (FTHLS5.ABQ)
JINPR TRANSITION (FTHLS5.JINPR)
MAXXO TRANSITION (FTHLS5.MAXXO)

TAKEOFF MINIMUMS
Rwys 1, 19: Standard.



NOTE: Chart not to scale.

SW-4, 09 NOV 2017 to 07 DEC 2017