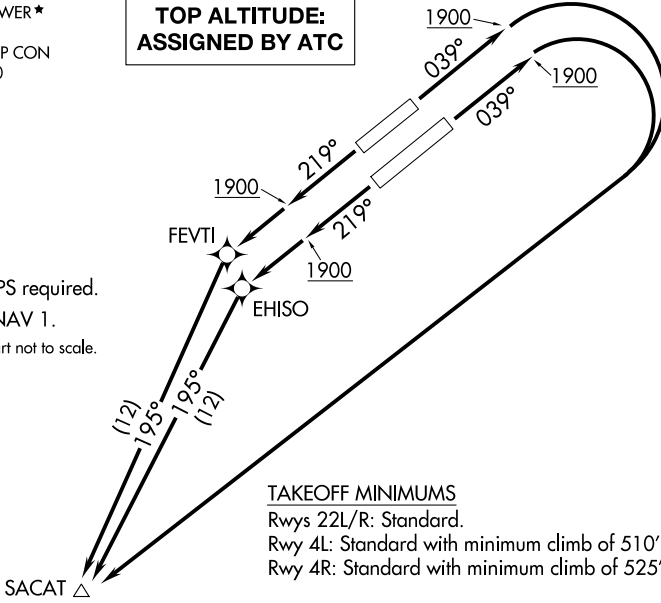


FALCON TOWER *
124.6
PHOENIX DEP CON
120.7 239.0

**TOP ALTITUDE:
ASSIGNED BY ATC**



NOTE: GPS required.
NOTE: RNAV 1.
NOTE: Chart not to scale.

TAKEOFF MINIMUMS

Rwys 22L/R: Standard.
Rwy 4L: Standard with minimum climb of 510' per NM to 4300.
Rwy 4R: Standard with minimum climb of 525' per NM to 4200.

TAKEOFF OBSTACLE NOTES

- Rwy 4L: Electrical systems beginning 248' from DER, 416' left of centerline, up to 50' AGL/1430' MSL. Light poles 417' from DER, 29' left of centerline, up to 48' AGL/1428' MSL. Trees beginning 418' from DER, 244' left of centerline, up to 40' AGL/1423' MSL. Tree 1188' from DER, 155' right of centerline, 40' AGL/1420' MSL. Obstruction light 1314' from DER, 424' left of centerline, 54' AGL/1434' MSL. Rods beginning 1236' from DER, 424' left of centerline, up to 57' AGL/1437' MSL. Windsock 1523' from DER, 487' left of centerline, 34' AGL/1414' MSL.
- Rwy 4R: Trees beginning 412' from DER, 15' left of centerline, up to 35' AGL/1425' MSL. Light poles beginning 513' from DER, 350' right of centerline, up to 51' AGL/1441' MSL. Obstruction light 531' from DER, 583' right of centerline, 50' AGL/1444' MSL. Trees beginning 585' from DER, 350' right of centerline, up to 40' AGL/1460' MSL. Traffic signal 914' from DER, 68' left of centerline, 27' AGL/1417' MSL.
- Rwy 22L: Light poles beginning 256' from DER, 421' right of centerline, up to 24' AGL/1384' MSL. Windmill 562' from DER, 457' right of centerline, 39' AGL/1389' MSL. Light pole 1206' from DER, 510' left of centerline, 38' AGL/1398' MSL.
- Rwy 22R: Light poles beginning 297' from DER, 65' right of centerline, up to 43' AGL/1403' MSL. Trees beginning 369' from DER, 127' right of centerline, up to 25' AGL/1385' MSL.



DEPARTURE ROUTE DESCRIPTION

TAKEOFF RUNWAYS 4L/4R: Climb heading 039° to 1900 then climbing right turn direct SACAT. Thence. . . .

TAKEOFF RUNWAY 22L: Climb heading 219° to 1900 then direct EHISO then on track 195° to SACAT. Thence. . . .

TAKEOFF RUNWAY 22R: Climb heading 219° to 1900 then direct FEVTI then on track 195° to SACAT. Thence. . . .

. . . .maintain 5000, expect clearance to filed altitude/flight level 10 minutes after departure.

SW-4: 09 NOV 2017 to 07 DEC 2017

SW-4: 09 NOV 2017 to 07 DEC 2017