

MESA, ARIZONA

AL-6647 (FAA)

17117

WAAS CH 90525 W04B	APP CRS 039°	Rwy Idg TDZE Apt Elev	5101 1383 1394
--	------------------------	-----------------------------	---

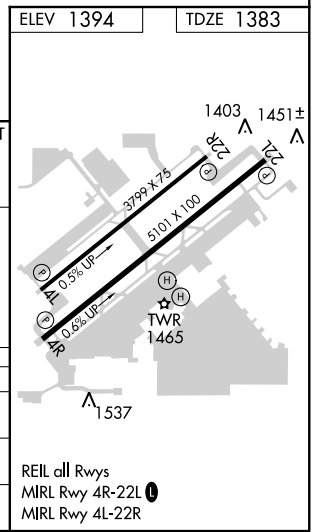
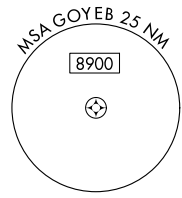
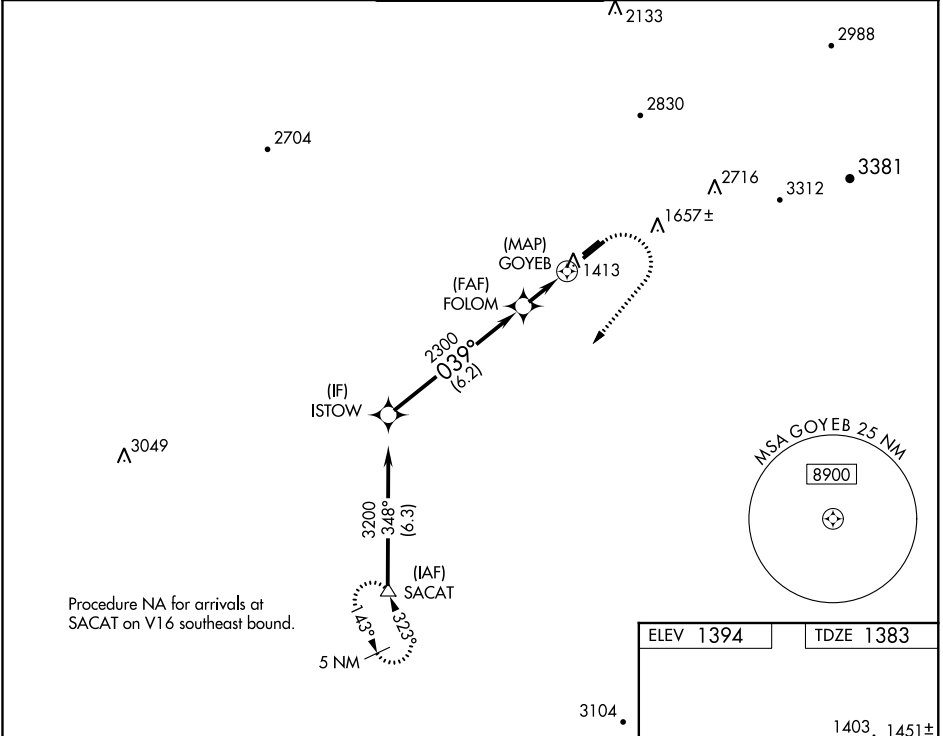
RNAV (GPS) RWY 4R

FALCON FIELD (F'F'Z)

⚠ DME/DME RNP-0.3 NA. When local altimeter setting not received, use Phoenix Sky Harbor Intl altimeter setting and increase all MDA 80 feet and increase LNAV Cat C visibility 1/8 mile. Helicopter visibility reduction below 1 SM NA.

MISSED APPROACH: Climb to 1900 then climbing right turn to 5000 direct SACAT and hold, continue climb-in-hold to 5000.

ATIS 118.25	PHOENIX APP CON 120.7 239.0	FALCON TOWER * 124.6 (CTAF) 0	GND CON 121.3	UNICOM 122.95
-----------------------	---------------------------------------	--	-------------------------	-------------------------



ISTOW	VGSi and descent angles not coincident (VGSi Angle 4.00/TCH 42).			1900	5000	SACAT
3200	FOLOM	GOYEB				
039°	3.00° TCH 41					
2300						
6.2 NM 2 NM 0.8						
CATEGORY	A	B	C	D		
LP MDA	1680-1 297 (300-1)			NA		
LNAV MDA	1800-1 417 (500-1)		1800-1½ 417 (500-1½)		NA	
CIRCLING	1900-1 506 (600-1)		1900-1½ 506 (600-1½)		NA	

SW-4, 09 NOV 2017 to 07 DEC 2017

SW-4, 09 NOV 2017 to 07 DEC 2017

MESA, ARIZONA
Amdt 1E 07JAN16

33°28'N-111°44'W

RNAV (GPS) RWY 4R

FALCON FIELD (F'F'Z)