

WAAS CH <b>56625</b> <b>W04A</b>	APP CRS <b>039°</b>	Rwy Idg TDZE Apt Elev	<b>3799</b> <b>1383</b> <b>1394</b>
--	------------------------	-----------------------------	---

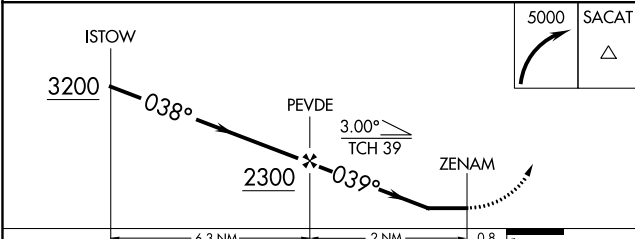
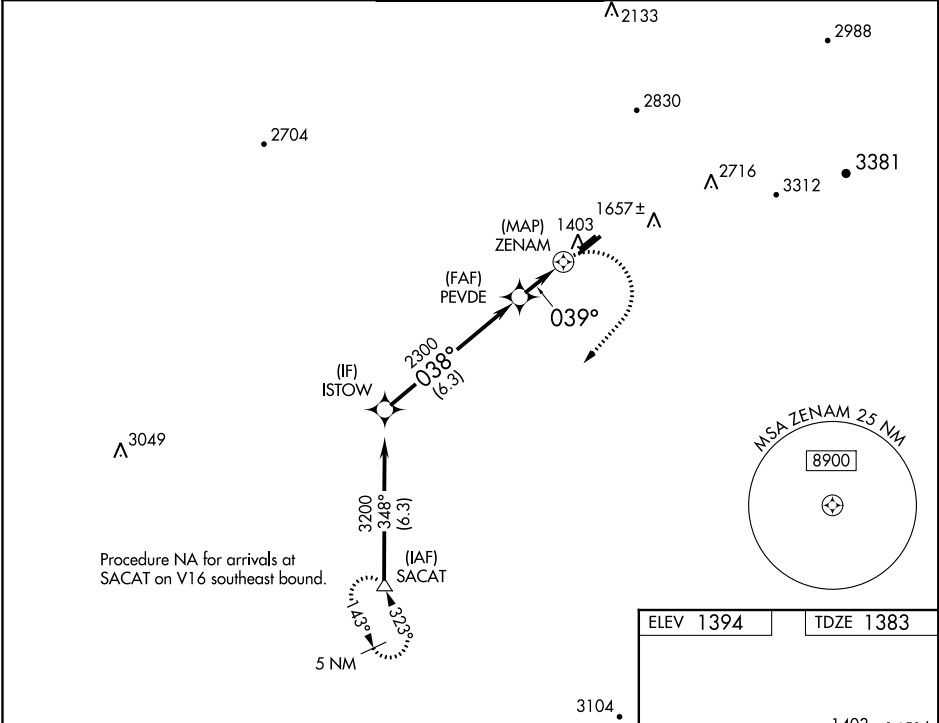
# RNAV (GPS) RWY 4L

FALCON FIELD (F'F'Z)

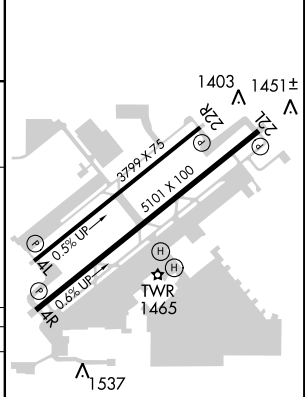
**⚠** Circling to Rwy 22R NA at night. When VGSI inoperative, Straight-in/Circling Rwy 4L procedure NA at night. DME/DME RNP-0.3 NA. Helicopter visibility reduction below 1 SM NA. When local altimeter setting not received, use Phoenix Sky Harbor Intl altimeter setting and increase all MDA 80 feet and increase LP Cat C visibility ¼ mile and LNAV Cat C visibility ½ mile.

**MISSED APPROACH:** Climbing right turn to 5000 direct SACAT and hold, continue climb-in-hold to 5000.

ATIS <b>118.25</b>	PHOENIX APP CON <b>120.7 239.0</b>	FALCON TOWER ★ <b>124.6 (CTAF) 0</b>	GND CON <b>121.3</b>	UNICOM <b>122.95</b>
-----------------------	---------------------------------------	---	-------------------------	-------------------------



ELEV 1394	TDZE 1383
-----------	-----------



CATEGORY	A	B	C	D
LP MDA	1780-1	397 (400-1)	1780-1½ 397 (400-1½)	NA
LNAV MDA	1800-1	417 (500-1)	1800-1¼ 417 (500-1¼)	NA
CIRCLING	1900-1	506 (600-1)	1900-1½ 506 (600-1½)	NA

REIL all Rwys  
MIRL Rwy 4R-22L 0  
MIRL Rwy 4L-22R

SW-4, 09 NOV 2017 to 07 DEC 2017

SW-4, 09 NOV 2017 to 07 DEC 2017