

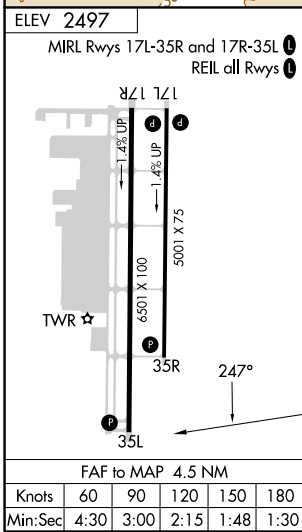
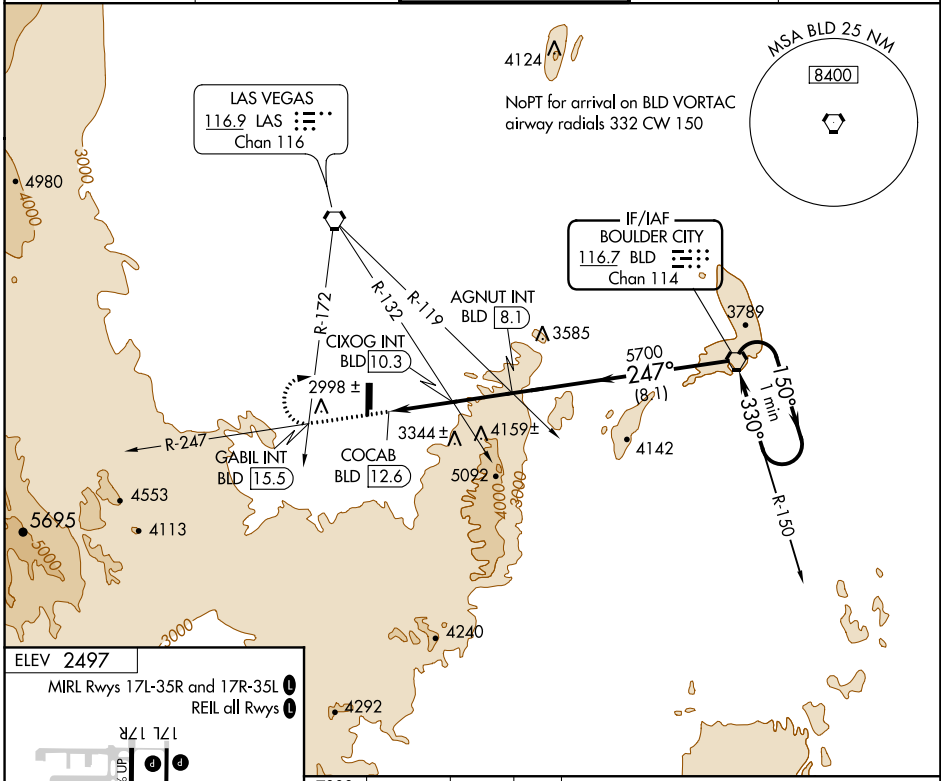
VORTAC BLD 116.7 Chan 114	APP CRS 247°	Rwy Idg TDZE Apt Elev N/A N/A 2497
-----------------------------------------------	------------------------	------------------------------------------------------------------------

VOR-C
HENDERSON EXECUTIVE (HND)

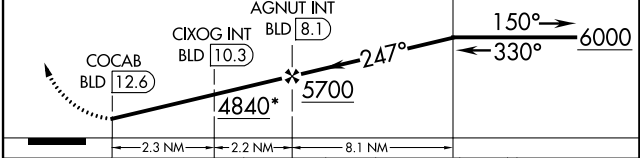
⚠ Circling to Rwy 35L NA at night.
⚠ If local altimeter setting not received, use McCarran Intl altimeter setting and increase all MDAs 60 feet.

MISSED APPROACH: Climb to 7000 on BLD VORTAC R-247 to GABIL INT/BLD 15.5 DME and right turn direct BLD VORTAC and hold.

ATIS 120.775	LAS VEGAS APP CON 118.4 307.25	HENDERSON TOWER* 125.1 (CTAF) 0	GND CON 127.8	UNICOM 122.95
------------------------	------------------------------------------	--------------------------------------------------	-------------------------	-------------------------



7000 GABIL INT BLD 15.5 BLD VORTAC *4960 when using McCarran Intl altimeter setting. One Minute Holding Pattern



CATEGORY	A	B	C	D
CIRCLING	4840-1¼ 2343 (2400-1¼)	4840-1½ 2343 (2400-1½)	4840-3 2343 (2400-3)	NA
CIXOG FIX MINIMUMS (DUAL VOR RECEIVERS OR DME REQUIRED)				
CIRCLING	3620-1¼ 1123 (1200-1¼)	3620-1½ 1123 (1200-1½)	3620-3 1123 (1200-3)	NA

SW-4, 09 NOV 2017 to 07 DEC 2017

SW-4, 09 NOV 2017 to 07 DEC 2017