

**TOP ALTITUDE:
FL210**

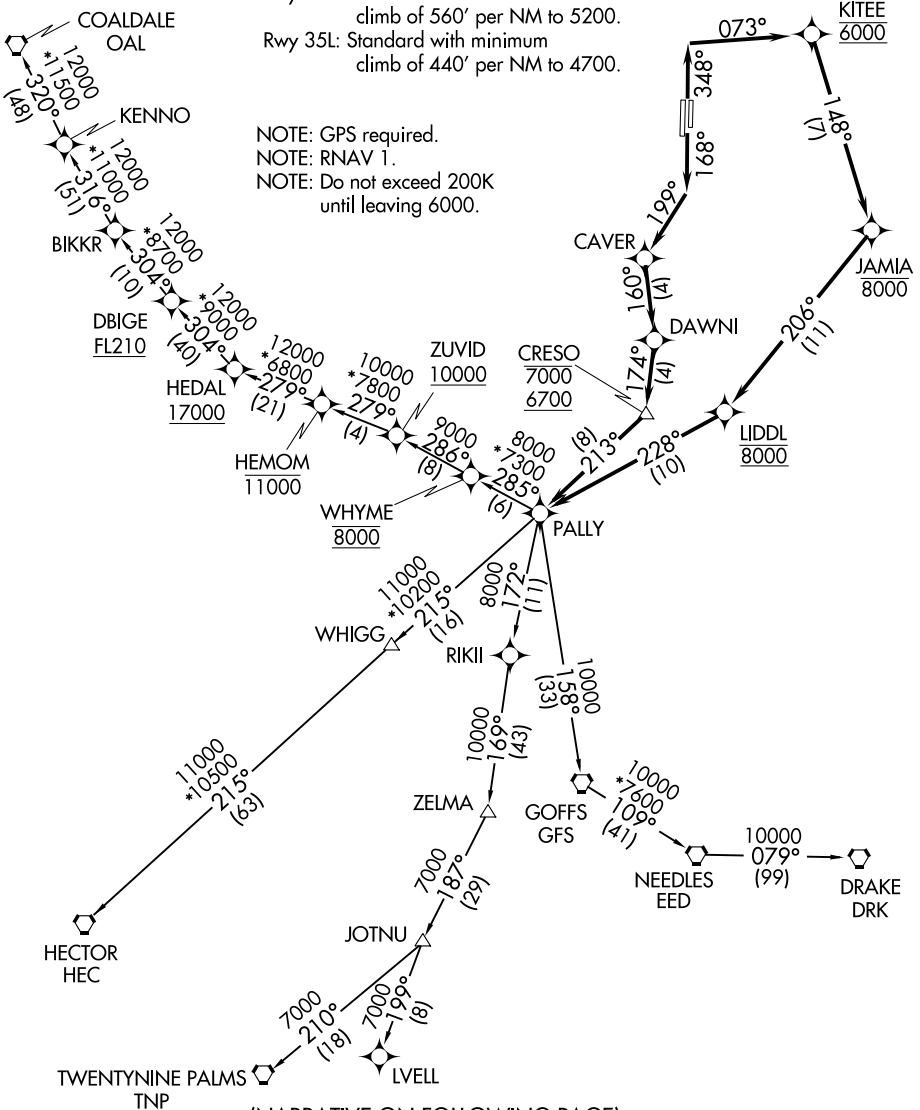
ATIS
120.775
GND CON
127.8
HENDERSON TOWER *
125.1 (CTAF)
LAS VEGAS DEP CON
118.4

TAKEOFF MINIMUMS

Rwys 17L, 35R: NA- ATC.
Rwy 17R: Standard with minimum
climb of 560' per NM to 5200.
Rwy 35L: Standard with minimum
climb of 440' per NM to 4700.

NOTE: GPS required.
NOTE: RNAV 1.
NOTE: Do not exceed 200K
until leaving 6000.

MC CARRAN INTL



(NARRATIVE ON FOLLOWING PAGE)

(NOTES CONTINUED ON FOLLOWING PAGE)

NOTE: Chart not to scale.

SW-4, 09 NOV 2017 to 07 DEC 2017

SW-4, 09 NOV 2017 to 07 DEC 2017