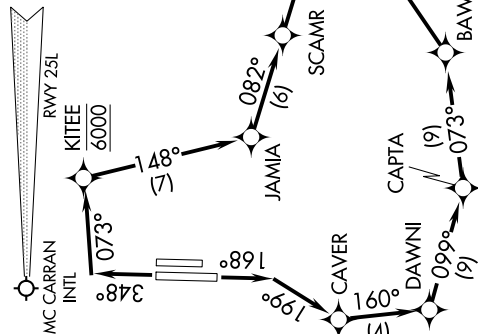


**TOP ALTITUDE:  
FL190**

ATIS  
120.775  
GND CON  
127.8  
HENDERSON TOWER \*  
125.1 (CTAF)  
LAS VEGAS DEP CON  
118.4

**TAKEOFF OBSTACLE NOTES**

Rwy 17R: Bush 134' from DER, 314' right of centerline, 2498' MSL.  
Fence 629' from DER, 75' right of centerline, 2510' MSL.  
Terrain 928' from DER, 717' left of centerline, 2552' MSL.  
Tank 1096' from DER, 311' right of centerline, 2533' MSL.  
Vehicles on road beginning 1149' from DER, crossing centerline, up to 1159' MSL.  
Poles beginning 2756' from DER, from 400' left to 698' right of centerline, up to 2764' MSL.



NOTE: GPS required.  
NOTE: RNAV 1.  
NOTE: Do not exceed 200K until leaving 6000.

**DEPARTURE ROUTE DESCRIPTION**

**TAKEOFF RUNWAY 17R:** Climb heading 168° to intercept course 199° to CAVER, then on track 160° to DAWN1, then on track 099° to CAPTA, then on track 073° to BAWLD, then on track 052° to cross ACSIN at or above 13000, then on track 069° to FLAMZ, thence. . . .

**TAKEOFF RUNWAY 35L:** Climb heading 348° to intercept course 073° to cross KITEE at 6000, then on track 148° to JAMIA, then on track 082° to SCAMR, then on track 082° to cross ACSIN at or above 13000, then on track 069° to FLAMZ, thence. . . .

. . . on assigned transition. Maintain ATC assigned altitude, expect filed altitude 10 minutes after departure.

FLAGSTAFF TRANSITION (FLAMZ4.FLG)

GALLUP TRANSITION (FLAMZ4.GUP)

WINSLOW TRANSITION (FLAMZ4.INW)

**TAKEOFF MINIMUMS**

Rwys 17L, 35R: NA-ATC.

Rwy 17R: Standard with minimum

climb of 560' per NM to 5200.

Rwy 35L: Standard with minimum

climb of 440' per NM to 4700.



NOTE: Chart not to scale.