

ACSN FOUR DEPARTURE (RNAV)

AL-6514 (FAA)

HENDERSON EXECUTIVE (HND)
LAS VEGAS, NEVADA

SW-4: 09 NOV 2017 to 07 DEC 2017

DEPARTURE ROUTE DESCRIPTION

TAKEOFF RUNWAY 17R: Climb on heading 168° to intercept course 199° to CAVER, then on track 160° to DAWN, then on track 099° to CAPTA, then on track 073° to BAWLD, then on track 052° to cross ACSN at or above 13000, thence. . .

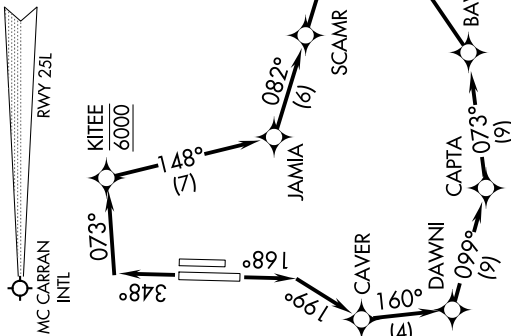
TAKEOFF RUNWAY 35L: Climb on heading 348° to intercept course 073° to cross KITEE at 6000, then on track 148° to JAMIA, then on track 082° to SCAMR, then on track 082° to cross ACSN at or above 13000, thence. . .

. . . on assigned transition, maintain ATC assigned altitude, expect filed altitude 10 minutes after departure.

CIRGS TRANSITION (ACSN4.CIRGS)

DOVE CREEK TRANSITION (ACSN4.DVC)

VERKIN TRANSITION (ACSN4.VERKIN)

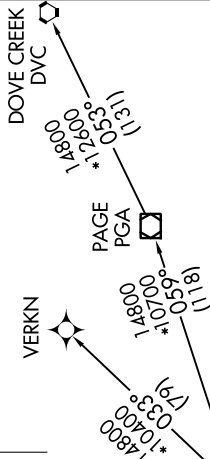


TOP ALTITUDE:
FL190

ATIS
120.775
GND CON
127.8
HENDERSON TOWER*
125.1 (CTAF)
LAS VEGAS DEP CON
118.4



NOTE: GPS required.
NOTE: RNAV 1.
NOTE: Do not exceed 200K until leaving 6000.



TAKEOFF MINIMUMS
Rwys 17L, 35R: NA - ATC.
Rwy 17R: Standard with minimum climb of 560' per NM to 5200.
Rwy 35L: Standard with minimum climb of 440' per NM to 4700.

TAKEOFF OBSTACLE NOTES

Rwy 17R: Bush 134' from DER, 314' right of centerline, 2498' MSL.
Fence 629' from DER, 75' right of centerline, 2510' MSL.
Terrain 928' from DER, 717' left of centerline, 2552' MSL.
Tank 1096' from DER, 311' right of centerline, 2533' MSL.
Vehicles on road beginning 1149' from DER, crossing centerline, up to 1159' MSL.
Poles beginning 2756' from DER, from 400' left to 698' right of centerline, up to 2764' MSL.

NOTE: Chart not to scale.

SW-4: 09 NOV 2017 to 07 DEC 2017

ACSN FOUR DEPARTURE (RNAV)

LAS VEGAS, NEVADA
HENDERSON EXECUTIVE (HND)