

WAAS CH <b>97700</b> <b>W29A</b>	APP CRS <b>291°</b>	Rwy Idg TDZE Apt Elev	<b>4319</b> <b>10</b> <b>10</b>
--	------------------------	-----------------------------	---------------------------------------

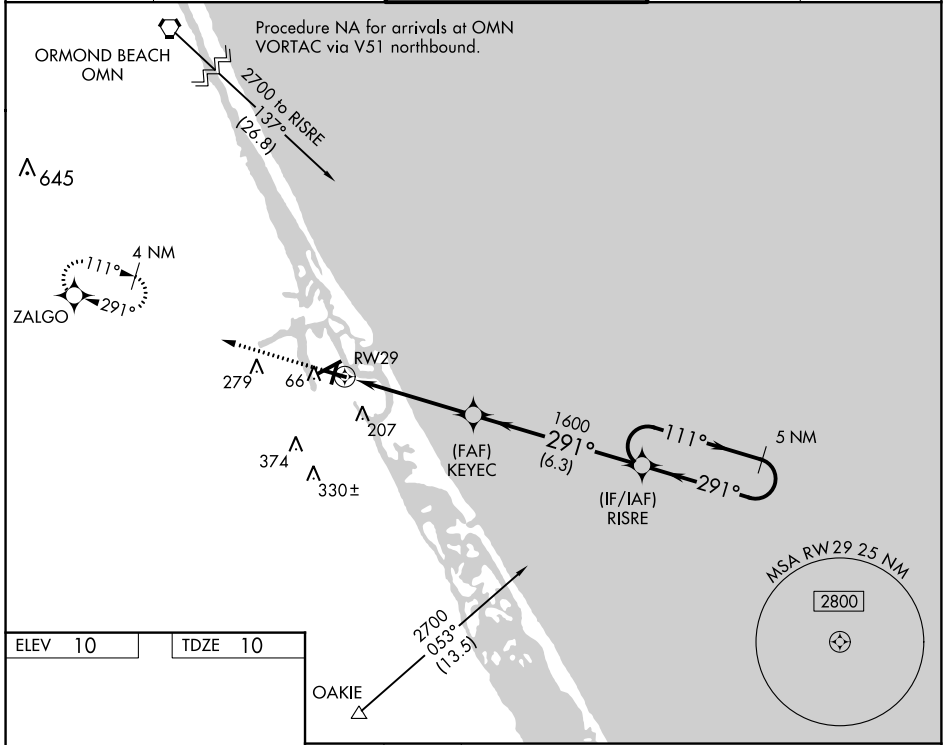
# RNAV (GPS) RWY 29

NEW SMYRNA BEACH MUNI (EVB)

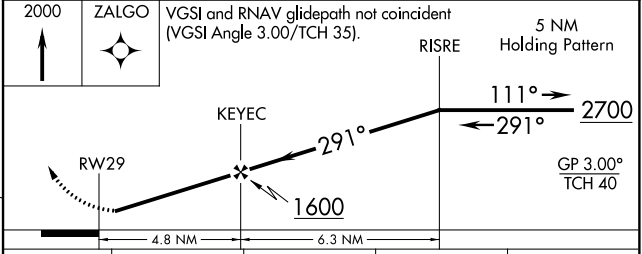
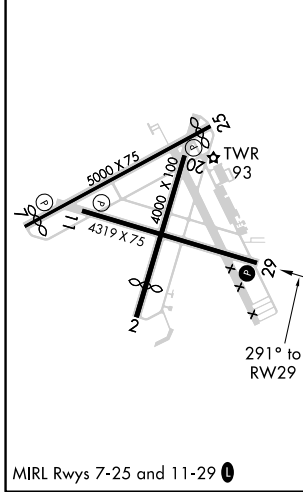
**⚠** Use Daytona Beach Intl altimeter setting; if not received, use Orlando Sanford Intl altimeter setting and increase DA to 342 feet and all MDAs 40 feet.  
**⚠** NA ASR DME/DME RNP-0.3 NA. Night landing: Rwy 29 Cats C and D, 7, 11, 25 NA.

MISSED APPROACH: Climb to 2000 direct ZALGO and hold.

ATIS <b>124.625</b>	DAYTONA APP CON <b>125.35 322.3</b>	NEW SMYRNA TOWER★ <b>119.675 (CTAF) 0</b>	GND CON <b>121.325</b>	UNICOM <b>122.8</b>
------------------------	--	--	---------------------------	------------------------



ELEV 10	TDZE 10
---------	---------



CATEGORY	A	B	C	D
LPV DA	308-1 298 (300-1)			
LNAV MDA	380-1 370 (400-1)		380-1¼ 370 (400-1¼)	
CIRCLING	440-1 430 (500-1)	460-1 450 (500-1)	580-1½ 570 (600-1½)	620-2 610 (700-2)

SE-3, 09 NOV 2017 to 07 DEC 2017

SE-3, 09 NOV 2017 to 07 DEC 2017