

WAAS CH 50500 W25A	APP CRS 246°	Rwy Idg 4319 TDZE 10 Apt Elev 10
--	------------------------	---

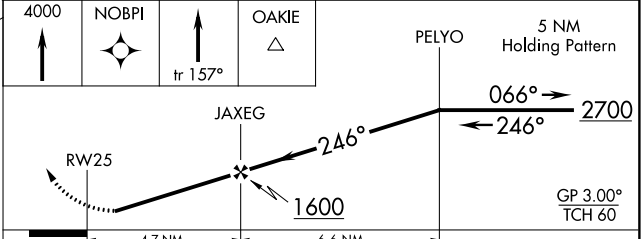
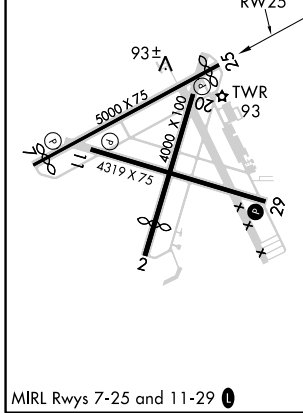
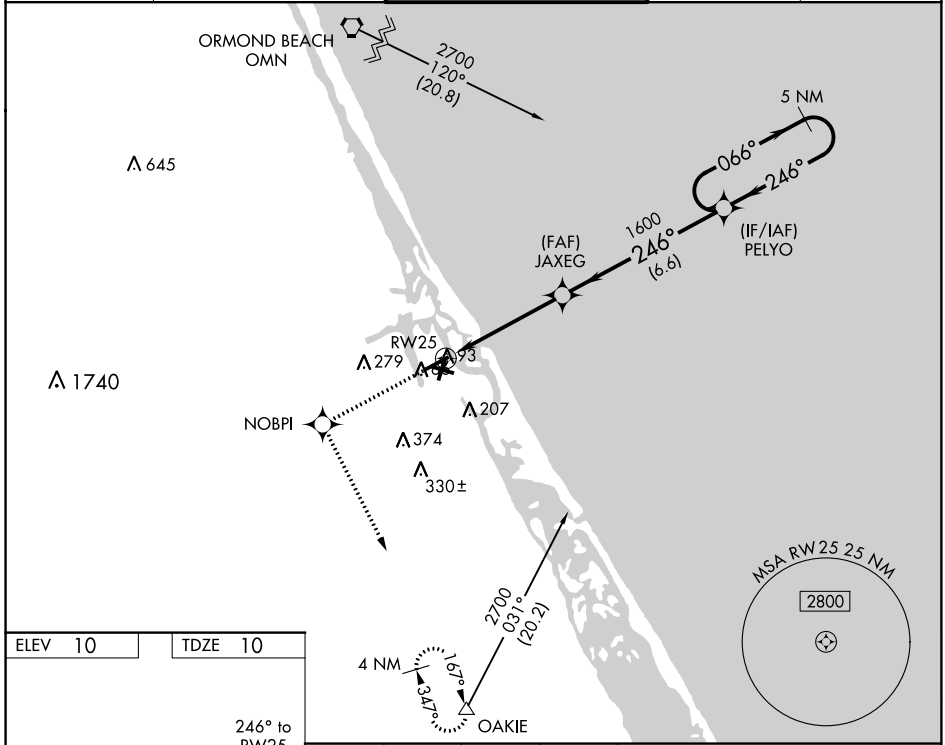
RNAV (GPS) RWY 25

NEW SMYRNA BEACH MUNI (EVB)

⚠ Use Daytona Beach Intl altimeter setting; if not received, use Orlando Sanford Intl altimeter setting and increase DA to 337 feet and all MDA's 40 feet. DME/DME RNP-0.3 NA. Helicopter visibility reduction below 1 SM NA. Night landing: Rwy 7, 11, 25 NA.

MISSED APPROACH: Climb to 4000 direct NOBPI and via 157° track to OAKIE and hold, continue climb-in-hold to 4000.

ATIS 124.625	DAYTONA APP CON 125.35 322.3	NEW SMYRNA TOWER★ 119.675 (CTAF) 0	GND CON 121.325	UNICOM 122.8
------------------------	--	--	---------------------------	------------------------



CATEGORY	A	B	C	D
LPV DA		303-1	293 (300-1)	NA
LNAV MDA		380-1	370 (400-1)	NA
CIRCLING	440-1 430 (500-1)	460-1 450 (500-1)	580-1½ 570 (600-1½)	NA

SE-3, 09 NOV 2017 to 07 DEC 2017

SE-3, 09 NOV 2017 to 07 DEC 2017