

APP CRS	Rwy Idg	<b>7001</b>
<b>094°</b>	TDZE	<b>76</b>
	Apt Elev	<b>76</b>

# RNAV (GPS) RWY 9

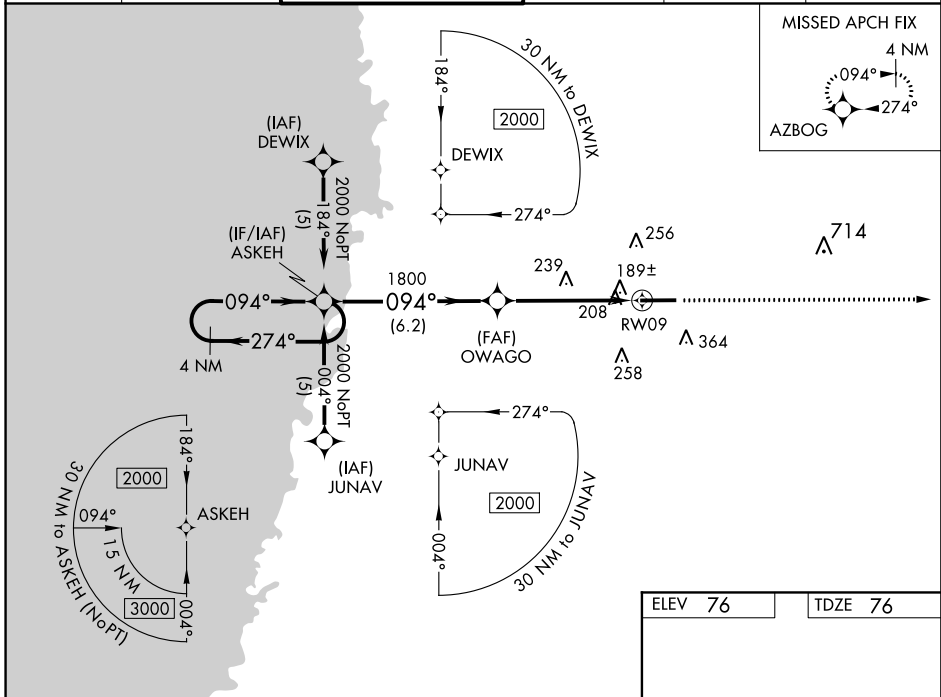
BROOKSVILLE-TAMPA BAY RGNL (BKV)

**⚠** Baro-VNAV NA when using Tampa Intl altimeter setting. For uncompensated Baro-VNAV systems, LNAV/VNAV NA below -15°C (5°F) or above 48°C (118°F).  
**⚠** DME/DME RNP-0.3 NA. When local altimeter setting not received, use Tampa Intl altimeter setting and increase all DA 77 feet and all MDA 80 feet, increase LNAV/VNAV all Cats and LNAV Cat C visibility ¼ mile. For inop MALSRS increase LNAV Cat D visibility to 1 ¼ mile. Circling Rwy 3/21/27 NA at night.



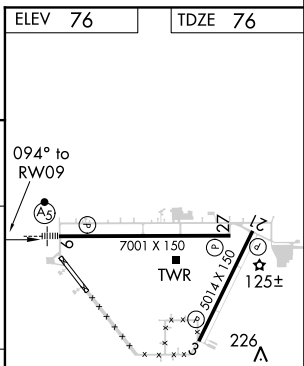
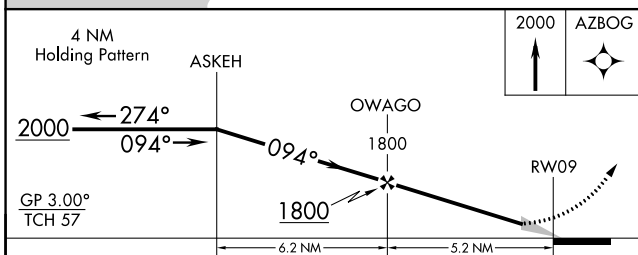
**MISSED APPROACH:**  
Climb to 2000 direct  
AZBOG and hold.

ASOS <b>134.725</b>	TAMPA APP CON <b>125.3 316.05</b>	BROOKSVILLE TOWER ★ <b>118.55 (CTAF) 0</b>	GND CON <b>121.4</b>	CLNC DEL <b>119.125</b>	UNICOM <b>123.0</b>
------------------------	--------------------------------------	-----------------------------------------------	-------------------------	----------------------------	------------------------



SE-3, 09 NOV 2017 to 07 DEC 2017

SE-3, 09 NOV 2017 to 07 DEC 2017



CATEGORY	A	B	C	D
LNAV/VNAV DA	507-1 431 (500-1)			
LNAV MDA	500-½	424 (500-½)	500-¾ 424 (500-¾)	500-1 424 (500-1)
CIRCLING	680-1	604 (700-1)	680-1¾ 604 (700-1¾)	680-2 604 (700-2)

MIRL Rwys 3-21 and 9-27