


LOC I-OSV <b>111.1</b>	APP CRS <b>094°</b>	Rwy Idg TDZE Apt Elev	<b>7001</b> <b>76</b> <b>76</b>
---------------------------	------------------------	-----------------------------	---------------------------------------

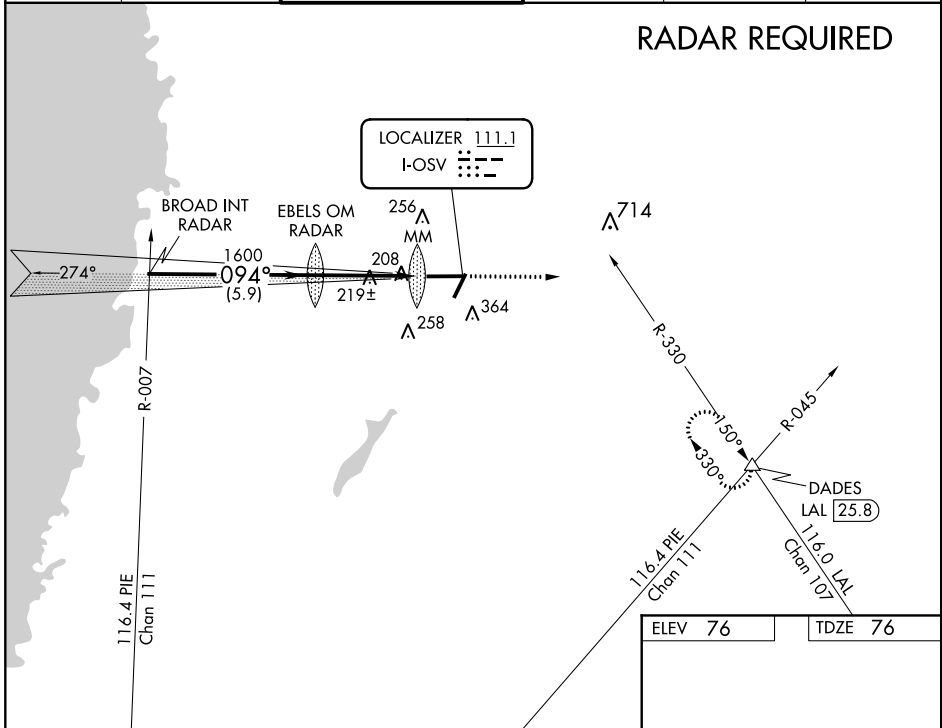
**ILS or LOC RWY 9**  
BROOKSVILLE-TAMPA BAY RGNL (BKV)

**▽** DME required. When local altimeter setting not received use Tampa Intl altimeter setting and increase all DA to 353 and all MDA 80 feet, increase S-LOC 9 Cat D and Circling Cat C/D visibility ¼ mile. For inop MALSR when using Tampa Intl increase S-ILS 9 all Cats visibility to 1 mile. Circling to Rwy 3/21/27 NA at night.

**MALSR**  
  
MISSED APPROACH: Climb to 3000 on heading 090° and LAL R-330 to DADES/LAL 25.8 DME and hold.

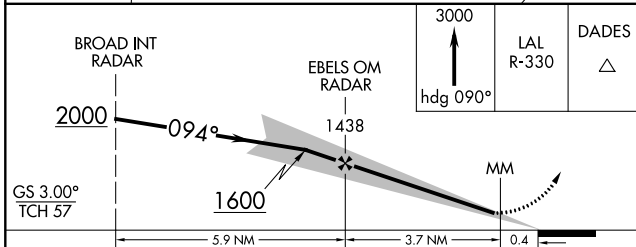
ASOS <b>134.725</b>	TAMPA APP CON <b>125.3 316.05</b>	BROOKSVILLE TOWER ★ <b>118.55 (CTAF) 0</b>	GND CON <b>121.4</b>	CLNC DEL <b>119.125</b>	UNICOM <b>123.0</b>
------------------------	--------------------------------------	---	-------------------------	----------------------------	------------------------

**RADAR REQUIRED**

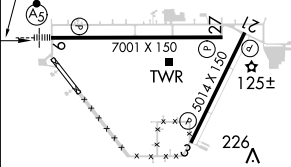


SE-3, 09 NOV 2017 to 07 DEC 2017

SE-3, 09 NOV 2017 to 07 DEC 2017



CATEGORY	A	B	C	D
S-ILS 9	276-½		200 (200-½)	
S-LOC 9	480-½	404 (500-½)	480-¾	404 (500-¾)
CIRCLING	680-1	604 (700-1)	680-1¾	680-2
			604 (700-¾)	604 (700-2)

ELEV 76	TDZE 76
	
MIRL Rwys 3-21 and 9-27	
FAF to MAP 4.1 NM	
Knots	60 90 120 150 180
Min:Sec	4:06 2:44 2:03 1:38 1:22