

VOR PGD <b>110.2</b>	APP CRS <b>222°</b>	Rwy Idg TDZE Apt Elev	<b>7193</b> <b>26</b> <b>26</b>
-------------------------	------------------------	-----------------------------	---------------------------------------

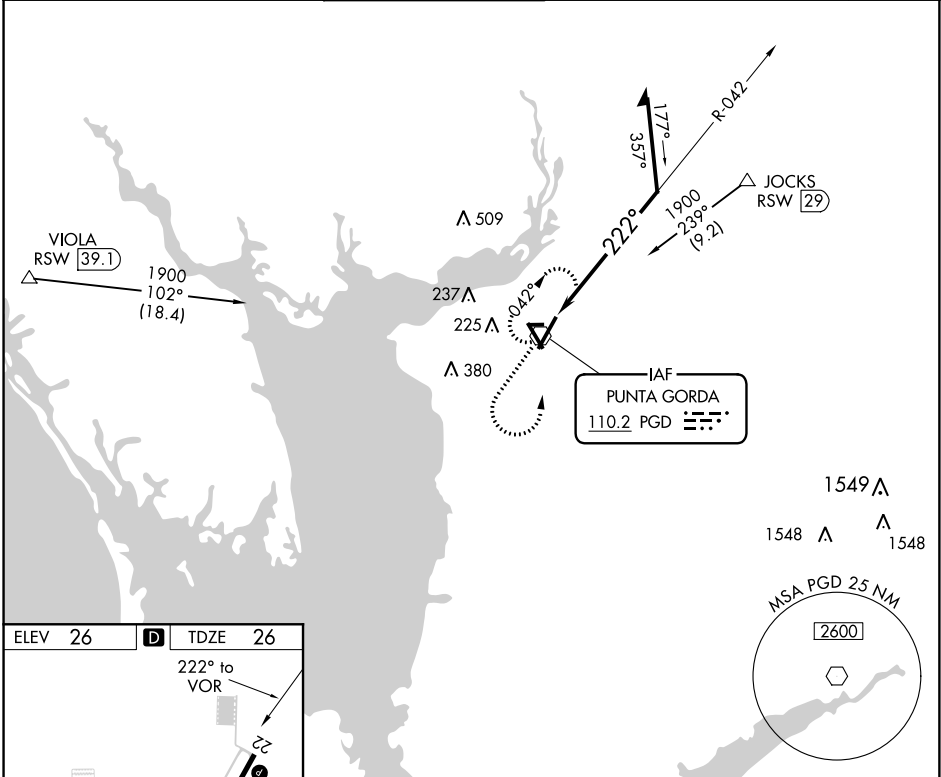
# VOR RWY 22

PUNTA GORDA (PGD)

**▽** When local altimeter setting not received, use Page Field altimeter setting and increase all MDA 60 feet; increase S-22 Cats C and D visibility 1/8 mile and increase Circling Cats C and D visibility 1/4 mile.

**MISSED APPROACH:** Climb to 1000 then climbing left turn to 1600 direct PGD GORDA VOR and hold.

ASOS <b>135.675</b>	FORT MYERS APP CON ★ <b>125.15 306.2</b>	PUNTA GORDA TOWER ★ <b>121.0 (CTAF) 0</b>	GND CON <b>119.55</b>	CLNC DEL <b>119.55</b> <b>127.05</b> when twr closed	UNICOM <b>122.975</b>
------------------------	---	--	--------------------------	--	--------------------------

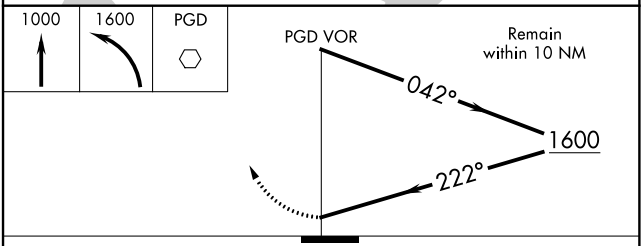


SE-3, 09 NOV 2017 to 07 DEC 2017

SE-3, 09 NOV 2017 to 07 DEC 2017

ELEV 26	<b>D</b>	TDZE 26
---------	----------	---------

HIRL Rwy 4-22 **1**  
MIRL Rwy 15-33 **1**  
REIL Rws 4, 15, 22 and 33 **1**



CATEGORY	A	B	C	D
S-22	560-1	534 (600-1)	560-1½	534 (600-1½)
<b>CIRCLING</b>	560-1 534 (600-1)	580-1 554 (600-1)	600-1½ 574 (600-1½)	740-2¼ 714 (800-2¼)