

WAAS CH 50214 W25A	APP CRS 255°	Rwy Idg TDZE Apt Elev	5253 400 400
--	------------------------	-----------------------------	---

RNAV (GPS) RWY 25R

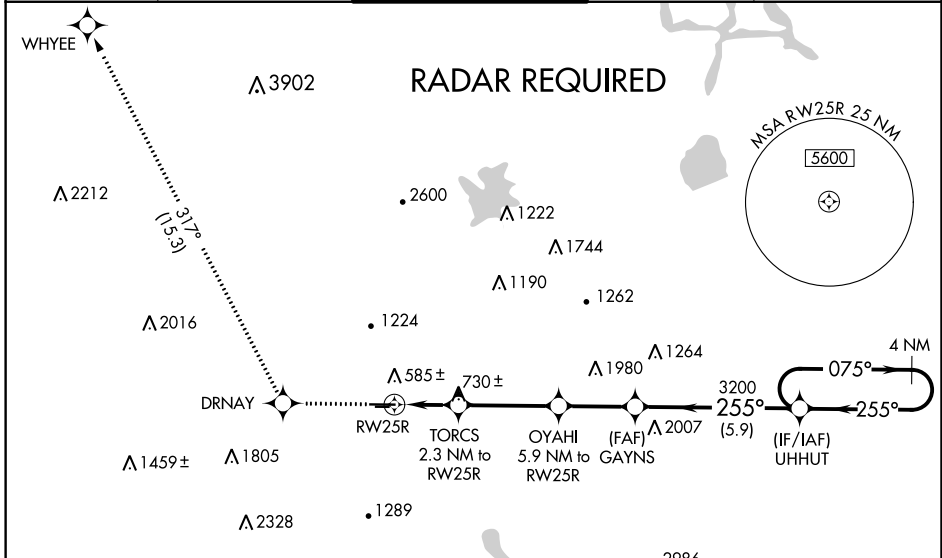
LIVERMORE MUNI (LVK)

⚠ For uncompensated Baro-VNAV systems, LNAV/VNAV NA below -2°C (29°F) or above 54°C (130°F). DME/DME RNP-0.3 NA. Circling Rwy 25L NA at night. When local altimeter not received, use Hayward altimeter setting: increase LPV DA to 683 feet, LNAV/VNAV DA to 888 feet and all MDA 100 feet; increase LNAV/VNAV all Cats visibility 3/8 SM, LNAV Cats C/D visibility 1/4 SM and increase Circling Cat C visibility 1/2 SM. For inoperative MALSRS, increase LNAV Cat C/D visibility to 1 3/8 SM. Circling NA north of Rwy 7L-25R. For inop MALSRS when using Hayward altimeter setting, increase LPV all Cats visibility to 7/8 SM, LNAV/VNAV all Cats visibility to 1 1/8 SM and LNAV Cat C/D to 1 1/8 SM. VDP and Baro-VNAV NA when using Hayward altimeter setting.

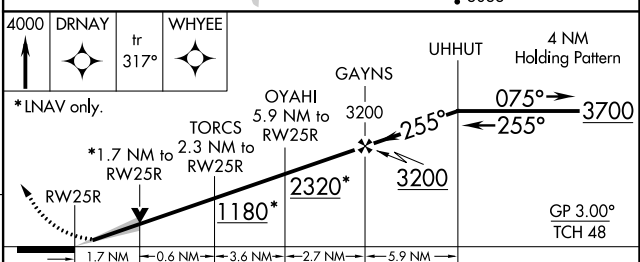
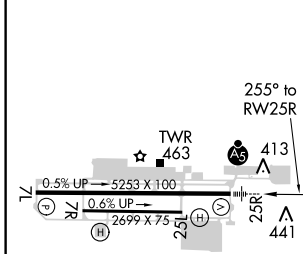


MISSED APPROACH:
Climb to 4000 direct DRNAY and on track 317° to WHYEE.

ATIS 119.65	NORCAL APP CON 123.85 278.3	LIVERMORE TOWER * 118.1 (CTAF) 0 239.25	GND CON 121.6	UNICOM 122.95
-----------------------	---------------------------------------	---	-------------------------	-------------------------



ELEV 400	TDZE 400
-----------------	-----------------



CATEGORY	A	B	C	D
LPV DA		600-1/2	200 (200-1/2)	
LNAV/VNAV DA		805-7/8	405 (500-7/8)	
LNAV MDA	980-1/2	580 (600-1/2)	980-1 1/4	580 (600-1 1/4)
C CIRCLING	980-1	580 (600-1)	1140-2 740 (800-2)	1780-3 1380 (1400-3)

SW-2: 09 NOV 2017 to 07 DEC 2017

SW-2: 09 NOV 2017 to 07 DEC 2017