

LOC I-LVK 110.5	APP CRS 255°	Rwy Idg TDZE Apt Elev	5253 400 400
---------------------------	------------------------	-----------------------------	---

LOC RWY 25R

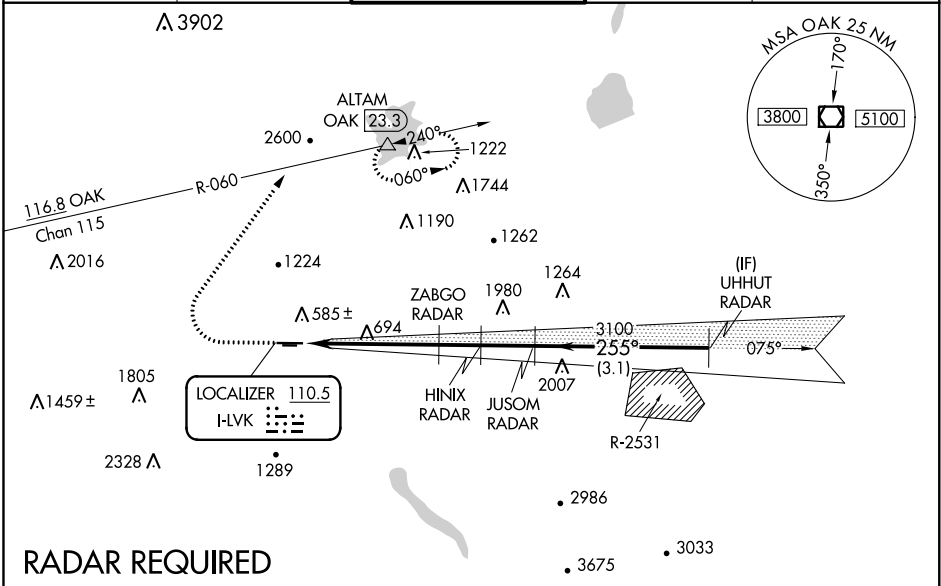
LIVERMORE MUNI (LVK)

⚠ Inoperative table does not apply to S-25R Cats C/D. Circling NA north of Rwy 7L-25R. DME and RADAR required.

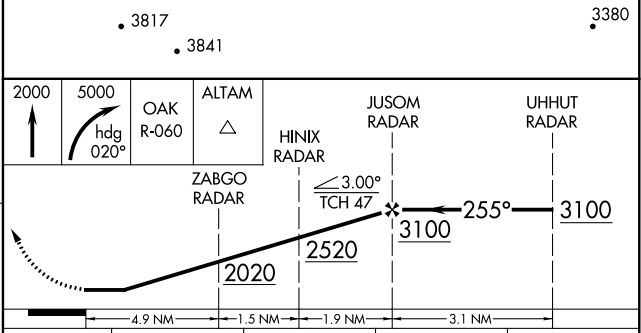
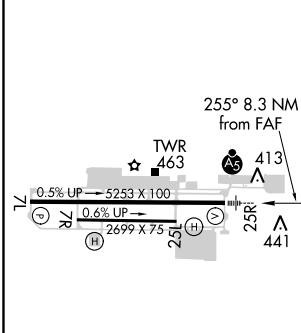


MISSED APPROACH: Climb to 2000 then climbing right turn to 5000 on heading 020° and OAK VOR/DME R-060 to ALTAM/OAK VOR/DME 23.3 DME and hold, continue climb-in-hold to 5000.
*Missed approach requires a minimum climb of 235 feet per NM to 3600.

ATIS 119.65	NORCAL APP CON 123.85 278.3	LIVERMORE TOWER * 118.1 (CTAF) 239.25	GND CON 121.6	UNICOM 122.95
-----------------------	---------------------------------------	---	-------------------------	-------------------------



ELEV 400	TDZE 400
----------	----------



MIRL Rwy 7R-25L HIRL Rwy 7L-25R	FAF to MAP 8.3 NM				
Knots	60	90	120	150	180
Min:Sec	8:18	5:32	4:09	3:19	2:46
ⓐ CIRCLING	2000-1¼ 1600 (1600-1¼)		2000-1½ 1600 (1600-1½)		2000-3 1600 (1600-3)

SW-2. 09 NOV 2017 to 07 DEC 2017

SW-2. 09 NOV 2017 to 07 DEC 2017