


LOC I-LVK 110.5	APP CRS 255°	Rwy Idg TDZE Apt Elev	5253 400 400
---------------------------	------------------------	-----------------------------	---

ILS RWY 25R

LIVERMORE MUNI (LVK)

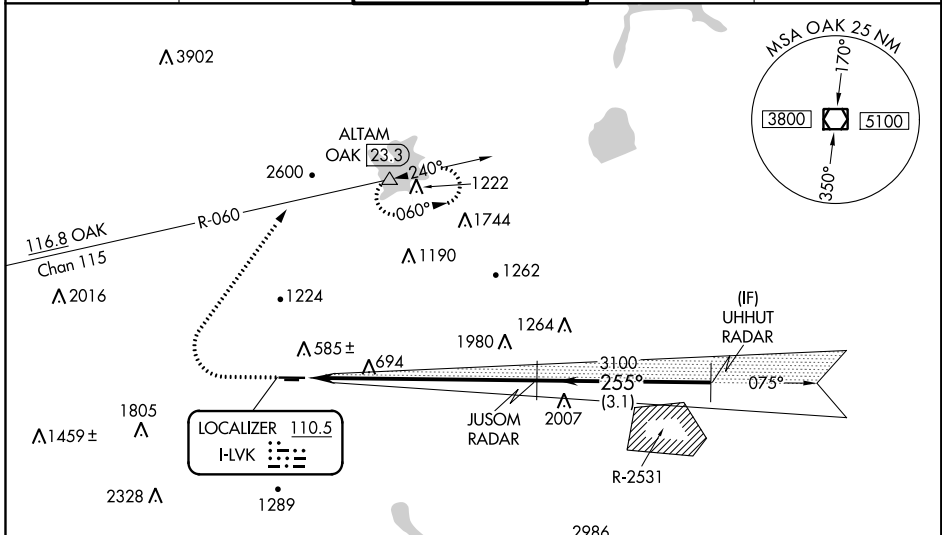
⚠ Autopilot coupled approach NA below 1700. DME and RADAR required.

MALSR

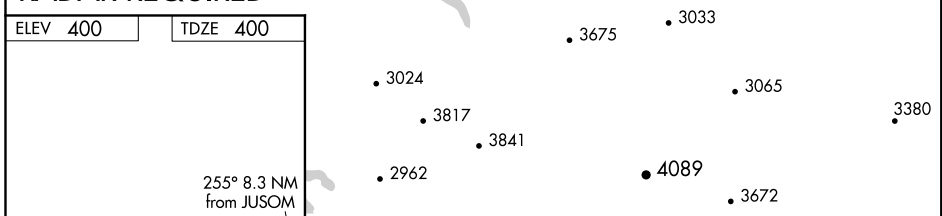


MISSED APPROACH: Climb to 1200 then climbing right turn to 5000 on heading 020° and OAK VOR/DME R-060 to ALTAM/OAK VOR/DME 23.3 DME and hold, continue climb-in-hold to 5000.
*Missed approach requires a minimum climb of 358 feet per NM to 3600, if unable to meet climb gradient, see LOC RWY 25R.

ATIS 119.65	NORCAL APP CON 123.85 278.3	LIVERMORE TOWER * 118.1 (CTAF) 239.25	GND CON 121.6	UNICOM 122.95
-----------------------	---------------------------------------	---	-------------------------	-------------------------



RADAR REQUIRED



<p>MIRL Rwy 7L-25R HIRL Rwy 7R-25L</p>	<table border="1"> <tr> <td>1200</td> <td>5000</td> <td>OAK R-060</td> <td>ALTAM</td> <td>JUSOM RADAR</td> <td>UHHUT RADAR</td> </tr> <tr> <td>↑</td> <td>hdg 020°</td> <td>△</td> <td></td> <td></td> <td></td> </tr> <tr> <td colspan="2">8.3 NM</td> <td colspan="2">3.1 NM</td> <td colspan="2"></td> </tr> </table>	1200	5000	OAK R-060	ALTAM	JUSOM RADAR	UHHUT RADAR	↑	hdg 020°	△				8.3 NM		3.1 NM			
1200	5000	OAK R-060	ALTAM	JUSOM RADAR	UHHUT RADAR														
↑	hdg 020°	△																	
8.3 NM		3.1 NM																	
CATEGORY	A	B	C	D															
S-ILS 25R*	600-½		200 (200-½)																

SW-2. 09 NOV 2017 to 07 DEC 2017

SW-2. 09 NOV 2017 to 07 DEC 2017