

WAAS CH <b>86502</b> <b>W11A</b>	APP CRS <b>107°</b>	Rwy Idg TDZE <b>145</b> Apt Elev <b>145</b>	<b>4001</b>
--	------------------------	---	-------------

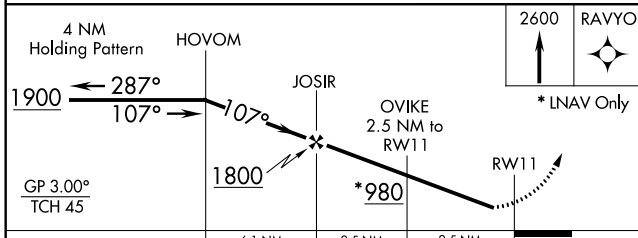
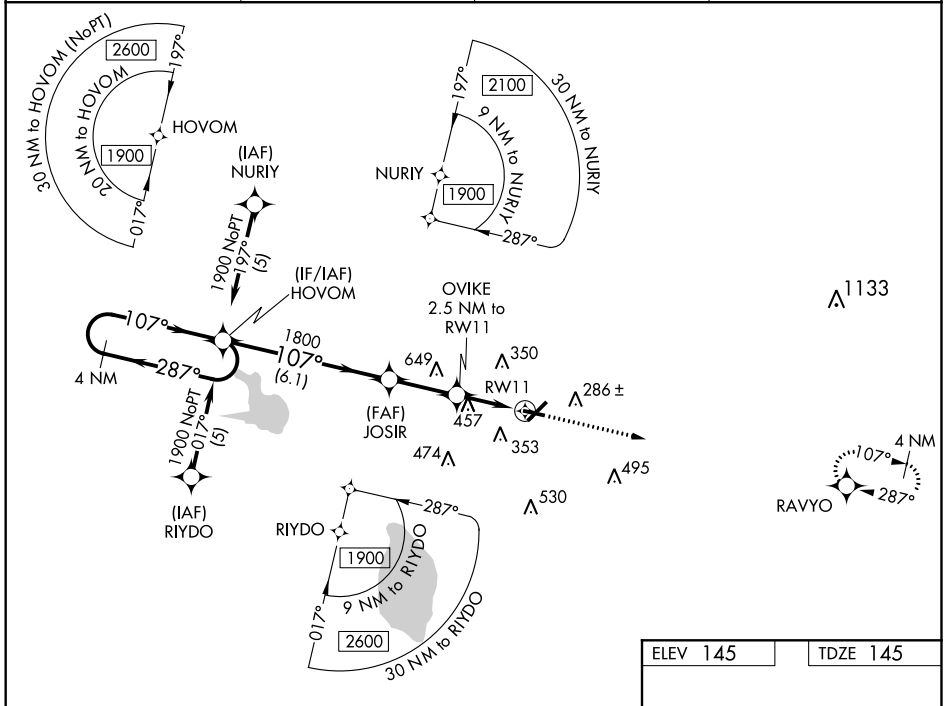
# RNAV (GPS) RWY 11

WINTER HAVEN'S GILBERT (GIF)

**⚠** Straight-in minimums NA at night. For uncompensated Baro-VNAV systems, LNAV/VNAV NA below -1.5°C (5°F) or above 48°C (119°F). DME/DME RNP-0.3 NA. Visibility reduction by helicopters NA. If local altimeter setting not received, use Bartow Muni altimeter setting and increase all DAs/MDAs 20 feet. Baro-VNAV NA when using Bartow Muni altimeter setting.

**⚠** MISSED APPROACH: Climb to 2600 direct RAVYO and hold.

ASOS <b>133.675</b>	TAMPA APP CON <b>120.65 290.3</b>	CLNC DEL (GCO) <b>121.725</b>	UNICOM <b>123.05 (CTAF) 0</b>
------------------------	--------------------------------------	----------------------------------	----------------------------------



ELEV 145	TDZE 145
REIL Rwys 5 and 23	
MIRL Rwy 5-23 0	

CATEGORY	A	B	C	D
LPV DA	395-1 250 (300-1)			
LNAV/ VNAV DA	647-1¾ 502 (600-1¾)			
LNAV MDA	760-1 615 (700-1)	760-1¾ 615 (700-1¾)	760-2 615 (700-2)	
CIRCLING	760-1¾ 615 (700-1¾)	820-2¼ 675 (700-2¼)		

SE-3, 09 NOV 2017 to 07 DEC 2017

SE-3, 09 NOV 2017 to 07 DEC 2017