

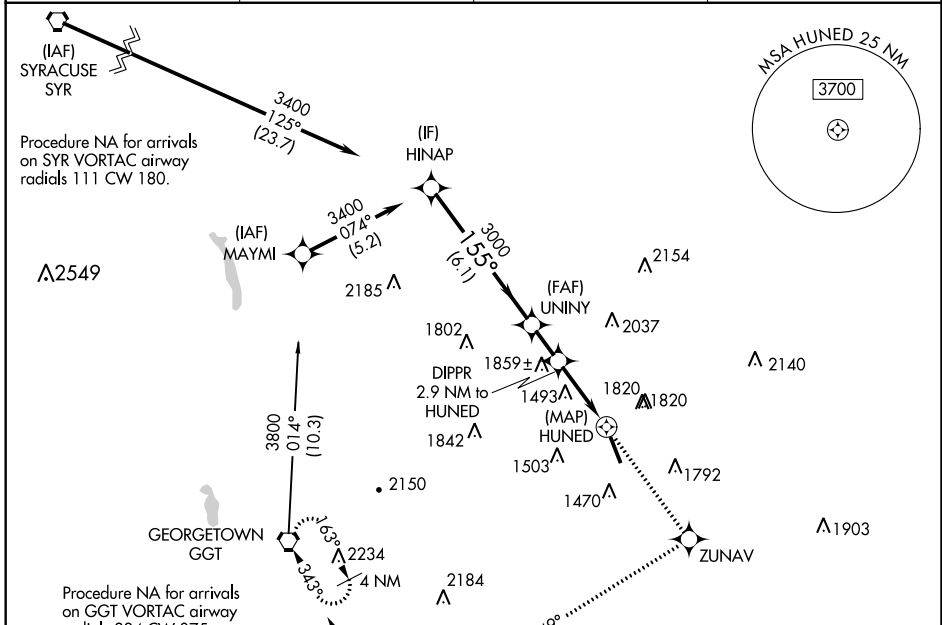
APP CRS	Rwy Idg	5014
155°	TDZE	1137
	Apt Elev	1137

RNAV (GPS) Y RWY 17

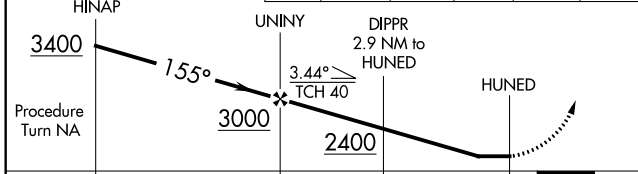
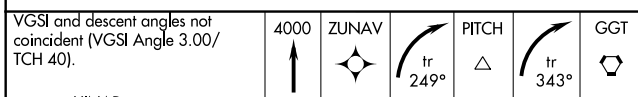
HAMILTON MUNI (VGC)

	DME/DME RNP-0.3 NA. Helicopter visibility reduction below 3/4 SM NA. When local altimeter setting not received, use Syracuse altimeter setting and increase all MDA 180 feet.		MISSED APPROACH: Climb to 4000 direct ZUNAV and right turn on track 249° to PITCH and right turn on track 343° to GGT VORTAC and hold.
--	---	--	--

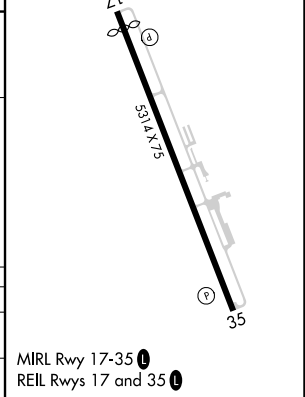
AWOS-3P 119.425	SYRACUSE APP CON 126.125 269.125	UNICOM 123.0 (CTAF)	122.7
---------------------------	--	-------------------------------	--------------



ELEV 1137		TDZE 1137
-----------	--	-----------



CATEGORY	A	B	C	D
RNAV MDA	2120-1¼ 983 (1000-1¼)	2120-1½ 983 (1000-1½)	2120-3 983 (1000-3)	NA
CIRCLING	2120-1¼ 983 (1000-1¼)	2120-1½ 983 (1000-1½)	2120-3 983 (1000-3)	NA



NE-2, 09 NOV 2017 to 07 DEC 2017

NE-2, 09 NOV 2017 to 07 DEC 2017