

WAAS CH 70518 W35A	APP CRS 350°	Rwy Idg TDZE 1135 Apt Elev 1137	5314
--	------------------------	---	-------------

RNAV (GPS) RWY 35

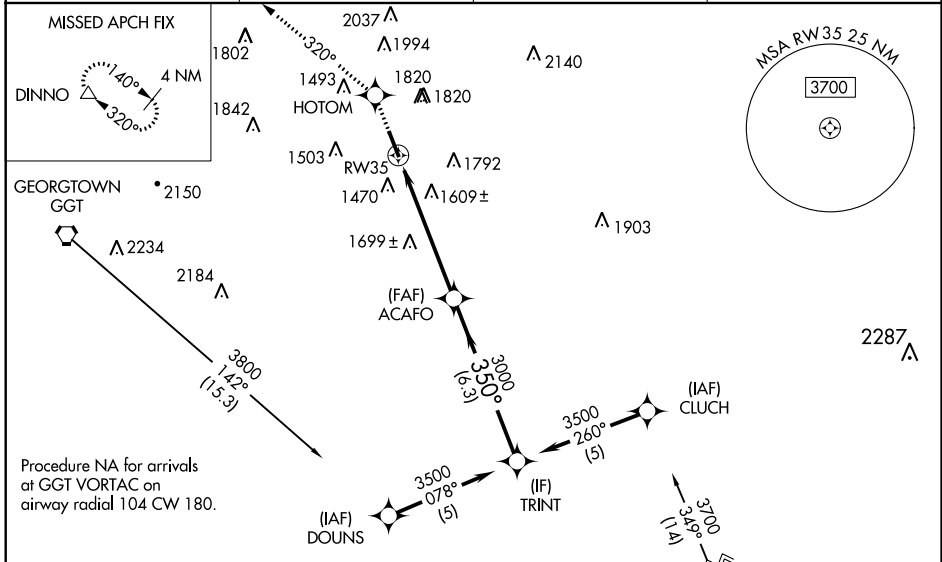
HAMILTON MUNI (VGC)

Baro-VNAV NA when using Syracuse altimeter setting. For uncompensated Baro-VNAV systems, LNAV/VNAV NA below -17°C (2°F) or above 54°C (130°F). DME/DME RNP-0.3 NA. Helicopter visibility reduction below ¾ SM NA. When local altimeter setting not received; use **NA** Syracuse altimeter setting and increase LPV DA to 1640, increase LNAV/VNAV DA to 2281 and all MDA 180 feet. Increase LPV visibility all Cats ¾ mile, LNAV Cats A and B ¼ mile, Cat C ½ mile and Circling Cat B visibility ¼ mile.

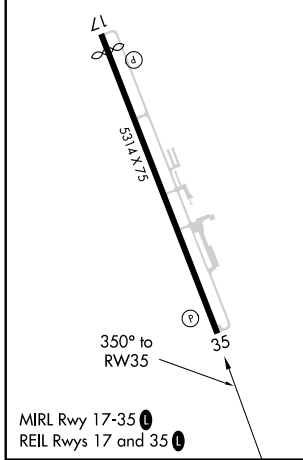
MISSED APPROACH: Climb to 4000 direct HOTOM and on track 320° to DINNO and hold, continue climb-in-hold to 4000.

-28°C

AWOS-3P 119.425	SYRACUSE APP CON 126.125 269.125	UNICOM 123.0 (CTAF)	122.7 0
---------------------------	--	-------------------------------	-----------------------



ELEV 1137	D	TDZE 1135
-----------	----------	-----------



4000	HOTOM	tr 320°	DINNO	VGSI and RNAV glidepath not coincident (VGSI Angle 4.00/TCH 40).	TRINT	Procedure Turn NA
* LNAV only						
RW35		*1.9 NM to RW35	ACAFO 3000	350°	3500	GP 3.08° TCH 50
1.9 NM		3.6 NM		6.3 NM		
CATEGORY	A	B	C	D		
LPV DA	1392-1 257 (300-1)			NA		
LNAV/VNAV DA	2114-4 979 (1000-4)			NA		
LNAV MDA	1960-1 825 (900-1)	1960-1¼ 825 (900-1¼)	1960-2½ 825 (900-2½)	NA		
CIRCLING	2040-1¼	903 (1000-1¼)	2120-3 983 (1000-3)	NA		

NE-2, 09 NOV 2017 to 07 DEC 2017

NE-2, 09 NOV 2017 to 07 DEC 2017