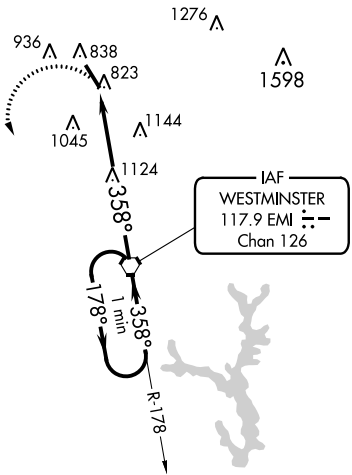
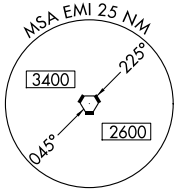


VORTAC EMI 117.9 Chan 126	APP CRS 358°	Rwy Idg TDZE Apt Elev	5100 788 789
---	------------------------	-----------------------------	---

VOR RWY 34

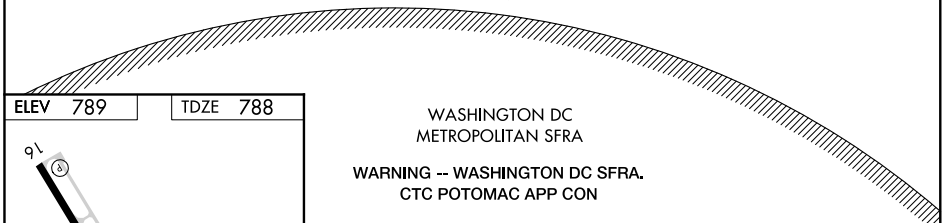
CARROLL COUNTY RGNL/JACK B. POAGE FIELD (DMW)

<p>▼ ▲ NA</p>		<p>MISSED APPROACH: Climbing left turn to 2900 direct EMI VORTAC and hold.</p>	
AWOS-3 121.25	POTOMAC APP CON 125.525 291.625	GCO 121.725	UNICOM 122.7 (CTAF) 0

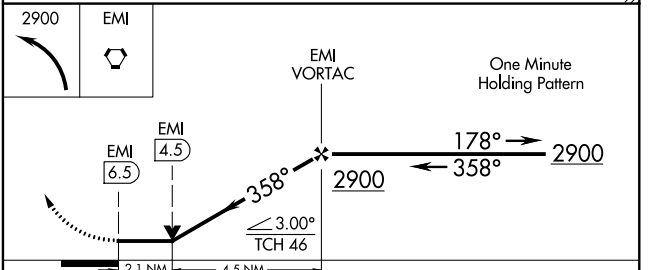


NE-3, 09 NOV 2017 to 07 DEC 2017

NE-3, 09 NOV 2017 to 07 DEC 2017



ELEV 789	TDZE 788
REIL Rwy 16 and 34 MIRL Rwy 16-34	
FAF to MAP 6.5 NM	
Knots	60 90 120 150 180
Min:Sec	6:30 4:20 3:15 2:36 2:10



CATEGORY	A	B	C	D
S-34	1480-1	692 (700-1)	1480-2 692 (700-2)	NA
CIRCLING	1480-1	691 (700-1)	1480-2 691 (700-2)	NA

VOR RWY 34