

(CONLE3.CONLE) 16035

SI-5533 (FAA)

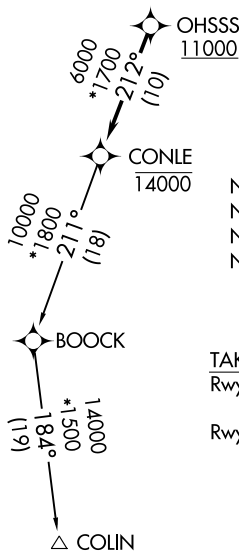
CARROLL COUNTY RGNL/JACK B POAGE FIELD(DMW)

CONLE THREE DEPARTURE (RNAV)

WESTMINSTER, MARYLAND

AWOS-3
121.25
CLNC DEL
129.525
UNICOM
122.7 (CTAF)
POTOMAC DEP CON
125.52 291.62

**TOP ALTITUDE:
ASSIGNED BY ATC**



NOTE: RNAV 1.
NOTE: DME/DME/IRU or GPS required.
NOTE: RADAR required.
NOTE: Turbojets only.

TAKEOFF MINIMUMS:
Rwy 16: 400-2³/₄ or Standard with minimum climb of 225' per NM to 1300.
Rwy 34: Standard.

TAKEOFF OBSTACLES:

- Rwy 16: Trees 1995' from DER, 657' left of centerline, up to 59' AGL/838' MSL.
Tower 2.3 NM from DER, 2042' left of centerline, 195' AGL/1144' MSL.
- Rwy 34: Trees beginning 105' from DER, 423' left of centerline, up to 87' AGL/886' MSL.
Trees beginning 967' from DER, 395' right of centerline, up to 85' AGL/864' MSL.
Terrain and trees beginning 1851' from DER, 123' left of centerline, up to 63' AGL/902' MSL.
Trees beginning 2603' from DER, 470' right of centerline, up to 69' AGL/868' MSL.

NOTE: Chart not to scale.

DEPARTURE ROUTE DESCRIPTION

Fly heading and maintain altitude assigned by ATC, expect RADAR vectors to cross OHSSS at or above 11000, then on track 212° to cross CONLE at or below 14000, then on COLIN transition. Expect filed altitude within 10 minutes after departure.

COLIN TRANSITION (CONLE3.COLIN)

CONLE THREE DEPARTURE (RNAV)

WESTMINSTER, MARYLAND

(CONLE3.CONLE) 04FEB16

CARROLL COUNTY RGNL/JACK B POAGE FIELD (DMW)

NE-3, 09 NOV 2017 to 07 DEC 2017

NE-3, 09 NOV 2017 to 07 DEC 2017