

WAAS CH <b>97529</b> <b>W17A</b>	APP CRS <b>180°</b>	Rwy Idg TDZE <b>1279</b> Apt Elev <b>1279</b>	<b>4002</b>
--	------------------------	---	-------------

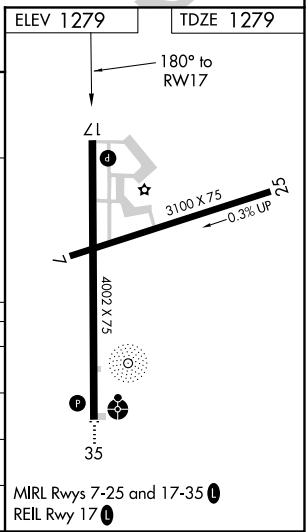
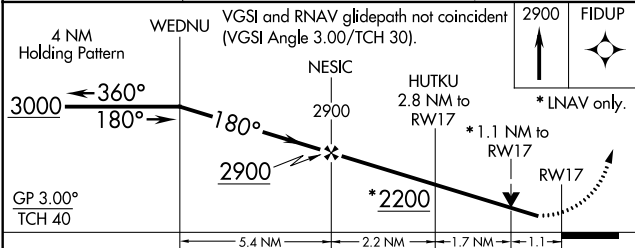
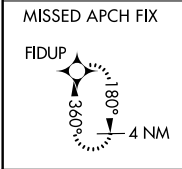
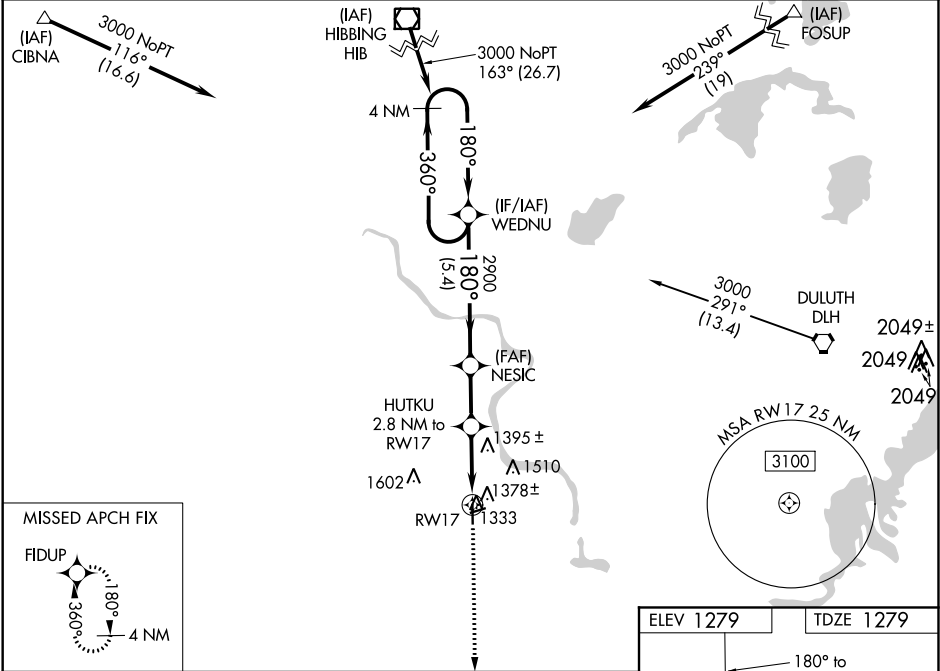
# RNAV (GPS) RWY 17

CLOQUET CARLTON COUNTY (COQ)

**⚠** Baro-VNAV NA when using Duluth altimeter setting. For uncompensated Baro-VNAV systems, LNAV/VNAV NA below -17°C (2°F) or above 54°C (130°F). DME/DME RNP-0.3 NA. Helicopter visibility reduction below 3/4 SM NA. VDP NA with Duluth altimeter setting. When local altimeter setting not received, use Duluth Intl altimeter setting and increase all DA/MDA 60 feet; increase LPV all Cats visibility 1/8 and LNAV and Circling Cat C visibility 1/4 mile. Night landing: Rwy 7, 25 NA.

**⚠** MISSED APPROACH: Climb to 2900 direct FIDUP and hold.

AWOS-3 <b>118.525</b>	DULUTH APP CON <b>125.45 233.7</b>	CLNC DEL <b>122.15</b>	UNICOM <b>122.8 (CTAF)</b> <b>0</b>
--------------------------	---------------------------------------	---------------------------	--



CATEGORY	A	B	C	D
LPV DA	1557-1	278 (300-1)		NA
LNAV/VNAV DA	1529-1	250 (300-1)		NA
LNAV MDA	1660-1	381 (400-1)	1660-1 1/8 381 (400-1 1/8)	NA
CIRCLING	1700-1 421 (500-1)	1780-1 501 (600-1)	1860-1 1/2 581 (600-1 1/2)	NA

NC-1, 09 NOV 2017 to 07 DEC 2017

NC-1, 09 NOV 2017 to 07 DEC 2017