

LOC/DME I-VQO 111.1 Chan 48	APP CRS 075°	Rwy Idg 3502 TDZE 8 Apt Elev 8
---	------------------------	---

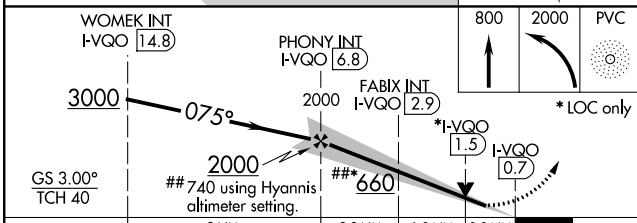
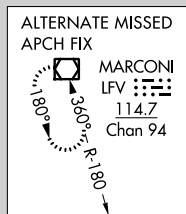
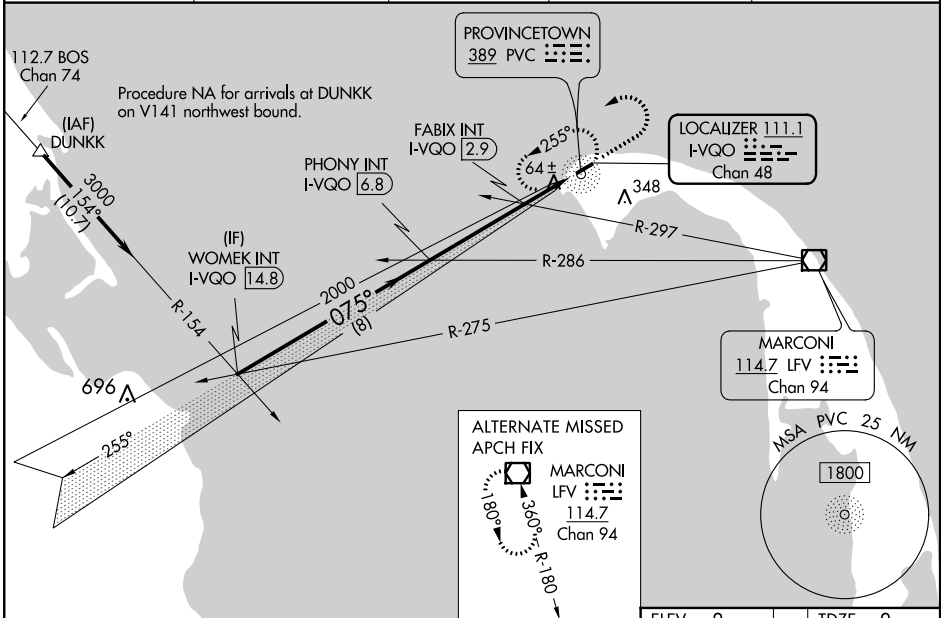
ILS or LOC RWY 7
PROVINCETOWN MUNI (PVC)

NA ADF required. Inop table does not apply to S-ILS Cat A and B. VDP NA when using Hyannis altimeter setting. When local altimeter setting not received, use Hyannis altimeter setting: increase DA to 271, increase all MDA 80 feet. Increase S-LOC 7 Cat B visibility 1/4 mile. For inop MALSF when using Hyannis altimeter setting, increase S-ILS 7 Cat A/B visibility to 1/8 mile.



MISSED APPROACH: Climb to 800 then climbing left turn to 2000 direct PVC NDB and hold, continue climb-in-hold to 2000.

AWOS-3PT 119.025	CAPE APP CON* 118.2	CLNC DEL 120.65	UNICOM 122.8 (CTAF)	122.85
----------------------------	-------------------------------	---------------------------	-------------------------------	---------------



CATEGORY	A	B	C	D
S-ILS 7	208-3/4	200 (200-3/4)		NA
S-LOC 7	660-3/4	652 (700-3/4)		NA
CIRCLING	660-1	652 (700-1)		NA
FABIX FIX MINIMUMS (DUAL VOR RECEIVERS OR DME REQUIRED)				
S-LOC 7	320-3/4	312 (400-3/4)		NA
CIRCLING	460-1 452 (500-1)	660-1 652 (700-1)		NA

ELEV 8	TDZE 8
--------	--------

REIL Rwy 7 and 25
HIRL Rwy 7-25

FAF to MAP 6.1 NM					
Knots	60	90	120	150	180
Min:Sec	6:06	4:04	3:03	2:26	2:02

NE-1, 09 NOV 2017 to 07 DEC 2017

NE-1, 09 NOV 2017 to 07 DEC 2017