

| | | | |
|---|------------------------|-----------------------------|---|
| VORTAC EWC 115.8 Chan 105 | APP CRS 256° | Rwy Idg TDZE Apt Elev | 4501 1253 1253 |
|---|------------------------|-----------------------------|---|

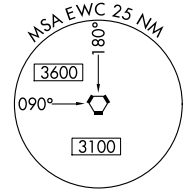
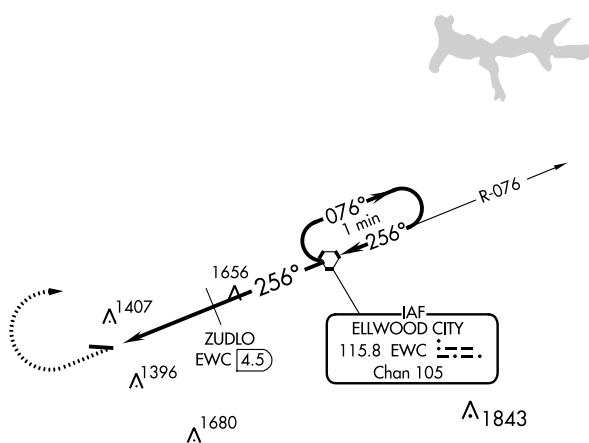
VOR RWY 28
BEAVER COUNTY (BVI)

▼ Helicopter visibility reduction below 1SM NA. When control tower closed, use Pittsburgh Intl altimeter setting and increase all MDA 60 feet, increase Circling Cat A/D visibility ¼ mile and increase ZUDLO fix minimums S-28 Cats C/D visibility ½ mile and Circling Cat C visibility ½ mile. Procedure NA at night.

▲ NA

MISSED APPROACH: Climb to 3000 then right turn direct EWC VORTAC and hold.

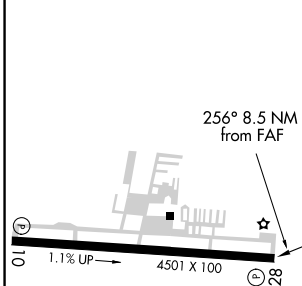
| | | | | |
|-----------------------|---|--|-------------------------|--|
| ATIS 118.35 | PITTSBURGH APP CON 124.75 338.2 | BEAVER COUNTY TOWER ★ 120.3 (CTAF) 0 | GND CON 121.8 | CLNC DEL 124.85 (when tower closed) |
|-----------------------|---|--|-------------------------|--|



NE-4, 09 NOV 2017 to 07 DEC 2017

NE-4, 09 NOV 2017 to 07 DEC 2017

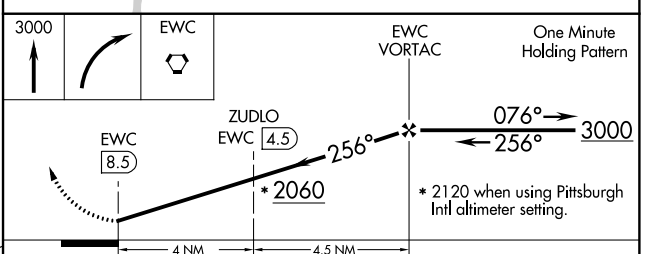
| | |
|-----------|-----------|
| ELEV 1253 | TDZE 1253 |
|-----------|-----------|



MIRL Rwy 10-28
REIL Rwys 10 and 28

FAF to MAP 8.5 NM

| | | | | | |
|---------|------|------|------|------|------|
| Knots | 60 | 90 | 120 | 150 | 180 |
| Min:Sec | 8:30 | 5:40 | 4:15 | 3:24 | 2:50 |



| CATEGORY | A | B | C | D |
|--------------------|-----------------------|---------------------------|----------|-------------------------------------|
| S-28 | 2060-1 807 (900-1) | 2060-1 ¼ 807 (900-1 ¼) | 2060-2 ½ | 807 (900-2 ½) |
| CIRCLING | 2060-1 807 (900-1) | 2060-1 ¼ 807 (900-1 ¼) | 2060-2 ½ | 807 (900-2 ½) |
| ZUDLO FIX MINIMUMS | | | | |
| S-28 | 1740-1 | 487 (500-1) | 1740-1 ⅜ | 487 (500-1 ⅜) |
| CIRCLING | 1740-1 | 487 (500-1) | 1740-1 ½ | 1820-2 487 (500-1 ½) 567 (600-2) |