

WAAS CH <b>72621</b> <b>W28A</b>	APP CRS <b>281°</b>	Rwy Idg TDZE <b>1253</b> Apt Elev <b>1253</b>
--	------------------------	---

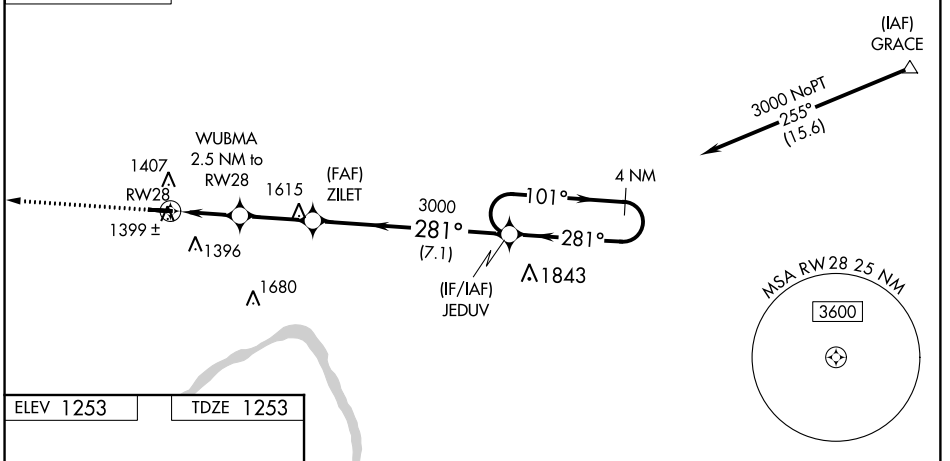
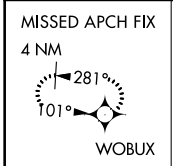
# RNAV (GPS) RWY 28

BEAVER COUNTY (BVI)

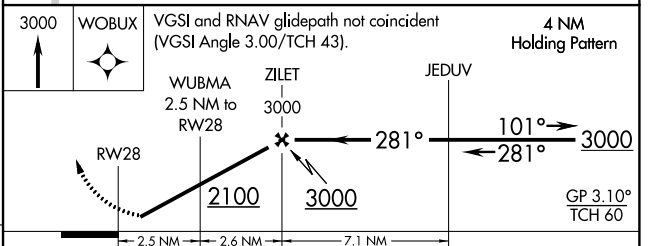
**NA** Baro-VNAV NA when using Pittsburgh Intl altimeter setting. For uncompensated Baro-VNAV systems, LNAV/VNAV NA below -17°C (2°F) or above 26°C (78°F). DME/DME RNP-0.3 NA. When control tower closed, use Pittsburgh Intl altimeter setting and increase all DA by 50 feet and all MDA 60 feet; increase LNAV/VNAV all Cats visibility 1/8 mile, increase LNAV Cats C and D visibility 1/4 mile. Helicopter visibility reduction below 3/4 SM NA.

MISSED APPROACH: Climb to 3000 direct WOBUX and hold.

ATIS <b>118.35</b>	PITTSBURGH APP CON <b>124.75 338.2</b>	BEAVER COUNTY TOWER * <b>120.3 (CTAF) 0</b>	GND CON <b>121.8</b>	CINC DEL <b>124.85</b> (when tower closed)
-----------------------	---	--	-------------------------	--



ELEV 1253	TDZE 1253
-----------	-----------



CATEGORY	A	B	C	D
LPV DA		1512-1	259 (300-1)	
LNAV/VNAV DA		1580-1	327 (400-1)	
LNAV MDA	1660-1	407 (500-1)	1660-1 1/8	407 (500-1 1/8)
CIRCLING	1720-1	467 (500-1)	1720-1 1/2	1820-2 467 (500-1 1/2) 567 (600-2)

NE-4, 09 NOV 2017 to 07 DEC 2017

NE-4, 09 NOV 2017 to 07 DEC 2017