

WAAS CH <b>62821</b> <b>W10A</b>	APP CRS <b>101°</b>	Rwy Idg TDZE <b>1237</b> Apt Elev <b>1253</b>
--	------------------------	---

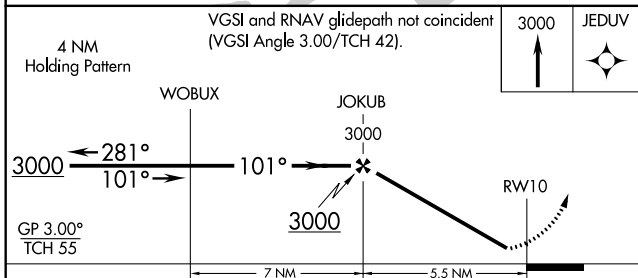
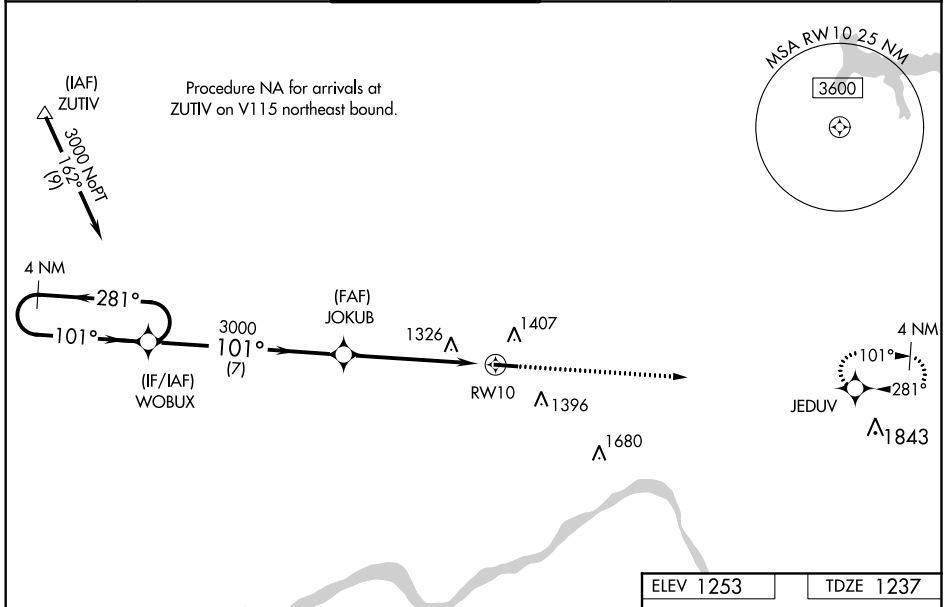
# RNAV (GPS) RWY 10

BEAVER COUNTY (BVI)

**NA** Baro-VNAV NA when using Pittsburgh Intl altimeter setting. For uncompensated Baro-VNAV systems, LNAV/VNAV NA below -17°C (2°F) or above 36°C (96°F). DME/DME RNP-0.3 NA. When control tower closed, use Pittsburgh Intl altimeter setting and increase all DA 50 feet and all MDA 60 feet; increase LPV all Cats visibility 1/8 mile, increase LNAV Cats C and D visibility 1/4 mile. Helicopter visibility reduction below 3/4 SM NA.

MISSED APPROACH: Climb to 3000 direct JEDUV and hold.

ATIS <b>118.35</b>	PITTSBURGH APP CON <b>124.75 338.2</b>	BEAVER COUNTY TOWER* <b>120.3 (CTAF) 0</b>	GND CON <b>121.8</b>	CLNC DEL <b>124.85</b> (when tower closed)
-----------------------	---	---	-------------------------	--



ELEV 1253	TDZE 1237
-----------	-----------

101° to RW10

1.1% UP

4501 X 100

MIRL Rwy 10-28 0

REIL Rws 10 and 28 0

CATEGORY	A	B	C	D
LPV DA		1527-1	290 (300-1)	
LNAV/VNAV DA		1513-1	276 (300-1)	
LNAV MDA		1580-1	343 (400-1)	
CIRCLING	1720-1	467 (500-1)	1720-1½ 467 (500-1½)	1820-2 567 (600-2)

NE-4, 09 NOV 2017 to 07 DEC 2017

NE-4, 09 NOV 2017 to 07 DEC 2017