

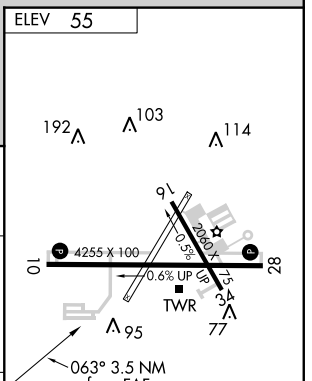
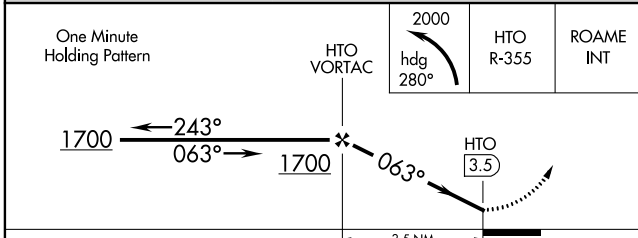
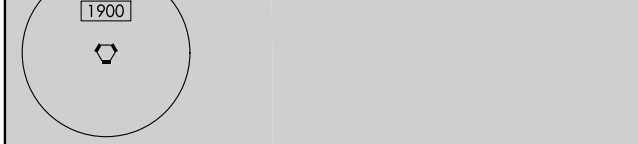
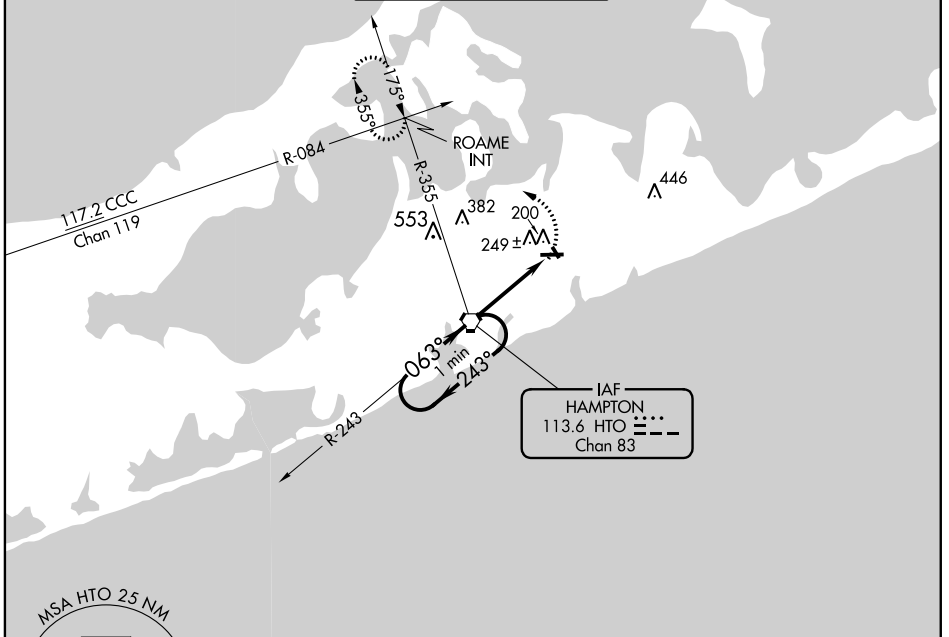
VORTAC HTO <b>113.6</b> Chan <b>83</b>	APP CRS <b>063°</b>	Rwy Idg TDZE <b>N/A</b> Apt Elev <b>55</b>
--	------------------------	--

**VOR-A**  
EAST HAMPTON (HTO)

**⚠** When local altimeter setting not received, use Westhampton Beach altimeter setting. Helicopter visibility reduction below 1 SM NA. Night landing: Rwy 10, 28 operational VGSI required, remain on or above VGSI glidepath until threshold.

MISSED APPROACH: Climbing left turn to 2000 via heading 280° and HTO VORTAC R-355 to ROAME INT and hold.

AWOS-3PT <b>118.075</b>	NEW YORK APP CON <b>125.975 343.65</b>	EAST HAMPTON TOWER ★ <b>125.225 (CTAF) 0</b>	GND CON <b>121.9</b>	CLNC DEL <b>118.95</b>	UNICOM <b>122.7</b>
----------------------------	---	---	-------------------------	---------------------------	------------------------



CATEGORY	A	B	C	D	
<b>C</b> CIRCLING	600-1	545 (600-1)	640-1½ 585 (600-1½)	800-2½ 745 (800-2½)	
WESTHAMPTON BEACH ALTIMETER SETTING MINIMUMS					
<b>C</b> CIRCLING	640-1	585 (600-1)	700-1¾ 645 (700-1¾)	840-2¼ 785 (800-2¼)	
FAF to MAP 3.5 NM					
Knots	60	90	120	150	180
Min:Sec	3:30	2:20	1:45	1:24	1:10

NE-2, 09 NOV 2017 to 07 DEC 2017

NE-2, 09 NOV 2017 to 07 DEC 2017