

WAAS CH 49037 W28A	APP CRS 282°	Rwy Idg 4255 TDZE 46 Apt Elev 55
--	------------------------	---

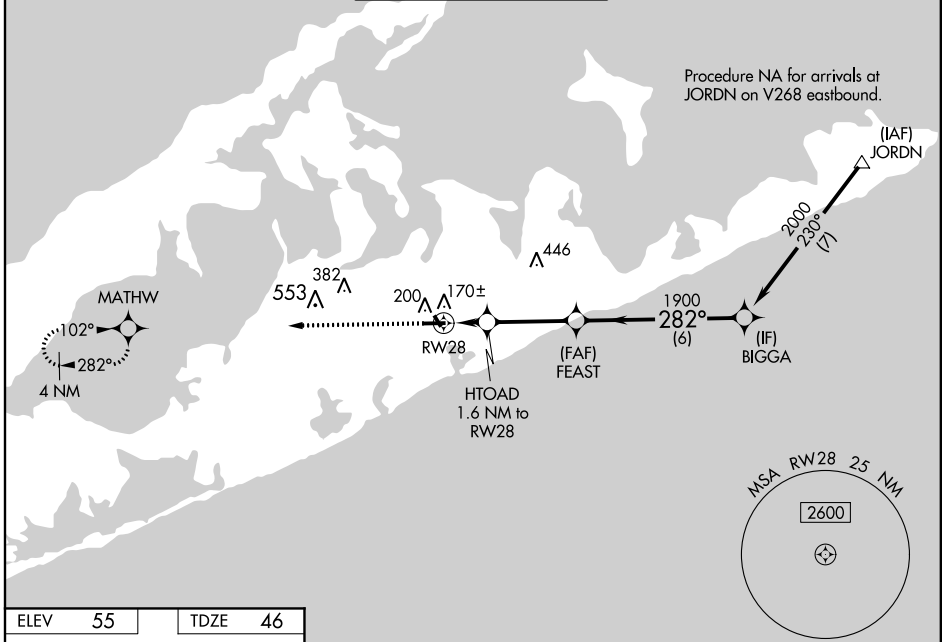
RNAV (GPS) Z RWY 28

EAST HAMPTON (HTO)

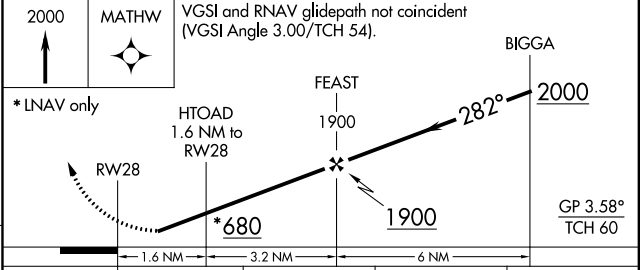
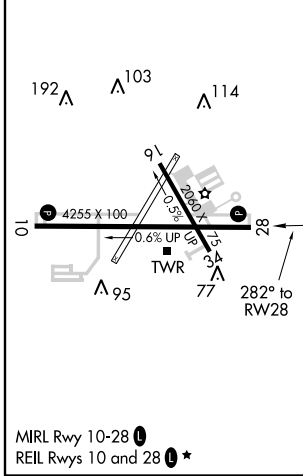
V Baro-VNAV NA when using Westhampton Beach altimeter setting. For uncompensated Baro-VNAV systems, LNAV/VNAV NA below -15°C (5°F) or above 48°C (118°F). DME/DME RNP-0.3 NA. Helicopter visibility reduction below 1 SM NA. When local altimeter setting not received, use Westhampton Beach altimeter setting and increase all DA 45 feet and all MDA 60 feet; increase LNAV Cat C and Circling Cat C visibility ¼ mile. Night landing: Rwy 10, 28 operational VGSI required, remain at or above VGSI glidepath until threshold.

Δ NA MISSED APPROACH: Climb to 2000 direct MATHW and hold.

AWOS-3PT 118.075	NEW YORK APP CON 125.975 343.65	EAST HAMPTON TOWER ★ 125.225 (CTAF) 0	GND CON 121.9	CLNC DEL 118.95	UNICOM 122.7
----------------------------	---	---	-------------------------	---------------------------	------------------------



ELEV 55	TDZE 46
----------------	----------------



CATEGORY	A	B	C	D
LPV DA		350-1 304 (300-1)		NA
LNAV/VNAV DA		356-1 310 (400-1)		NA
LNAV MDA		420-1 374 (400-1)		NA
C CIRCLING	600-1	545 (600-1)	640-1½ 585 (600-1½)	NA

NE-2, 09 NOV 2017 to 07 DEC 2017

NE-2, 09 NOV 2017 to 07 DEC 2017