

WAAS CH 40112 W10A	APP CRS 102°	Rwy Idg 4255 TDZE 55 Apt Elev 55
--	------------------------	---

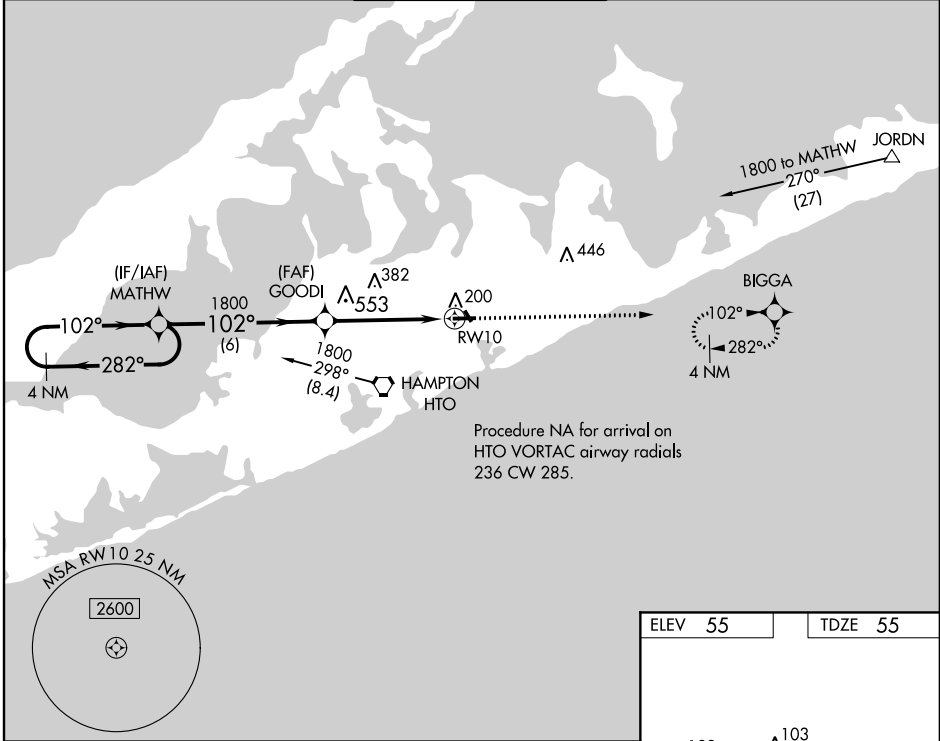
RNAV (GPS) Z RWY 10

EAST HAMPTON (HTO)

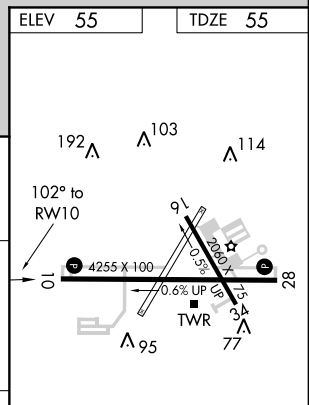
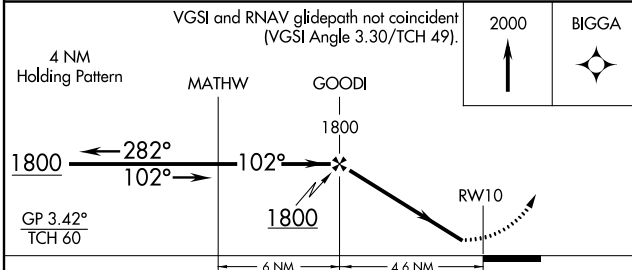
NA Baro-VNAV NA when using Westhampton Beach altimeter setting. For uncompensated Baro-VNAV systems, LNAV/VNAV NA below -15°C (5°F) or above 54°C (130°F). DME/DME RNP-0.3 NA. Helicopter visibility reduction below 1 SM NA. When local altimeter setting not received, use Westhampton Beach altimeter setting and increase all DA 45 feet; increase LNAV/VNAV visibility 1/2 mile all Cats. Night landing: Rwy 10, 28 operational VGSi required, remain on or above VGSi glidepath until threshold.

MISSED APPROACH:
Climb to 2000 direct BIGGA and hold.

AWOS-3PT 118.075	NEW YORK APP CON 125.975 343.65	EAST HAMPTON TOWER ★ 125.225 (CTAF) 0	GND CON 121.9	CLNC DEL 118.95	UNICOM 122.7
----------------------------	---	---	-------------------------	---------------------------	------------------------



Procedure NA for arrival on HTO VORTAC airway radials 236 CW 285.



CATEGORY	A	B	C	D
LPV DA	361-1	306 (400-1)		NA
LNAV/VNAV DA	419-1	364 (400-1)		NA

MIRL Rwy 10-28 **0**
REIL Rwy 10 and 28 **0** ★

NE-2, 09 NOV 2017 to 07 DEC 2017

NE-2, 09 NOV 2017 to 07 DEC 2017