

VOR/DME BIE <b>110.6</b> Chan <b>43</b>	APP CRS <b>345°</b>	Rwy Idg <b>5602</b> TDZE <b>1307</b> Apt Elev <b>1324</b>
---	------------------------	---

# VOR RWY 36

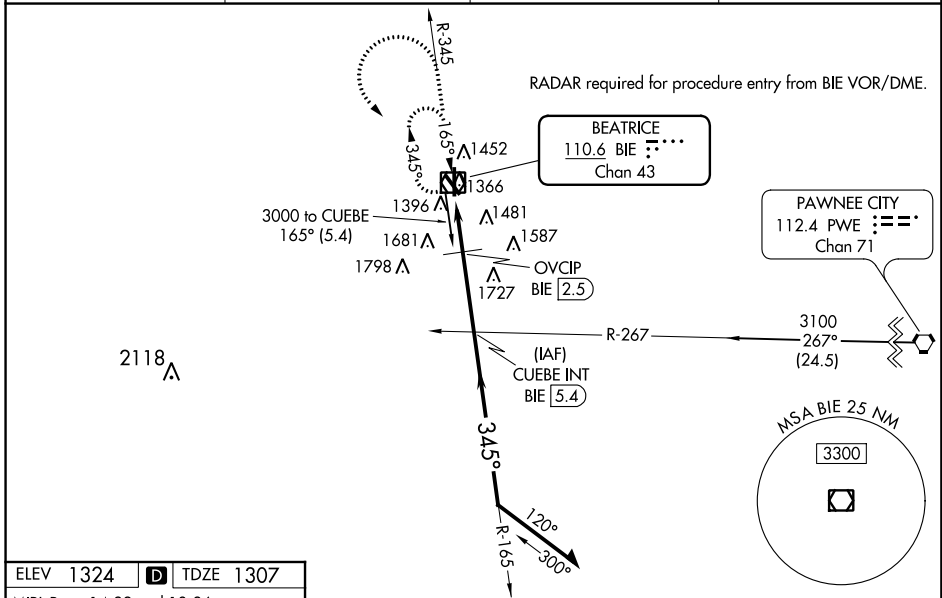
BEATRICE MUNI (BIE)

**⚠** VDP NA with Lincoln altimeter setting. When local altimeter setting not received, use Lincoln altimeter setting and increase all MDA 100 feet. Increase S-36 Cats C/D visibility to 1 3/4, Circling Cat B to 1 1/4, Cat C to 2 1/2 and Cat D to 2 3/4. Increase OVCIP fix minimums S-36 Cats C/D visibility 1/4 mile and Circling Cat D 1/2 mile. For inoperative MALS<sub>R</sub>, increase S-36 Cats A/B visibility to 1 and Cats C/D visibility to 1 7/8, increase OVCIP fix minimums S-36 Cats A/B visibility to 1. For inoperative MALS<sub>R</sub> when using Lincoln altimeter setting, increase S-36 Cat A visibility to 1 and Cats C/D to 2 1/2. Increase OVCIP fix minimums Cats A/B visibility to 1 and Cats C/D visibility to 1 1/2.



**MISSED APPROACH:**  
Climb to 3000 then left turn direct BIE VOR/DME and hold.

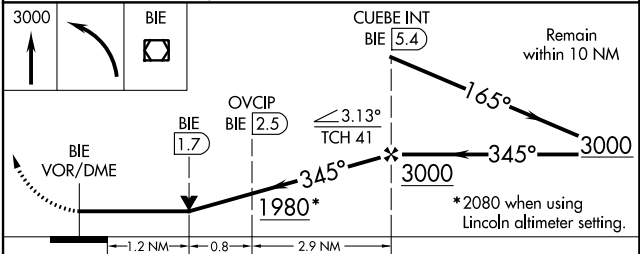
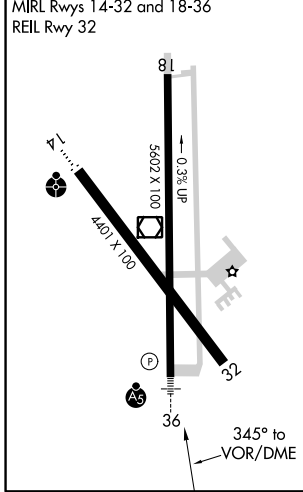
AWOS-3 <b>125.325</b>	MINNEAPOLIS CENTER <b>126.4 317.7</b>	COLUMBUS RADIO <b>122.5</b>	UNICOM <b>122.8 (CTAF) 0</b>
--------------------------	--	--------------------------------	---------------------------------



NC-2, 09 NOV 2017 to 07 DEC 2017

NC-2, 09 NOV 2017 to 07 DEC 2017

ELEV <b>1324</b>	<b>D</b>	TDZE <b>1307</b>
------------------	----------	------------------



CATEGORY	A	B	C	D
S-36	1980-3/4	673 (700-3/4)	1980-1 1/2	673 (700-1 1/2)
CIRCLING	1980-1	656 (700-1)	1980-1 7/8 656 (700-1 7/8)	2060-2 1/4 736 (800-2 1/4)
<b>OVCIP FIX MINIMUMS</b>				
S-36	1740-3/4 433 (500-3/4)			
CIRCLING	1820-1	496 (500-1)	1820-1 1/2 496 (500-1 1/2)	2060-2 1/4 736 (800-2 1/4)