

VOR/DME BIE 110.6 Chan 43	APP CRS 176°	Rwy Idg 5602 TDZE 1324 Apt Elev 1324
---	------------------------	---

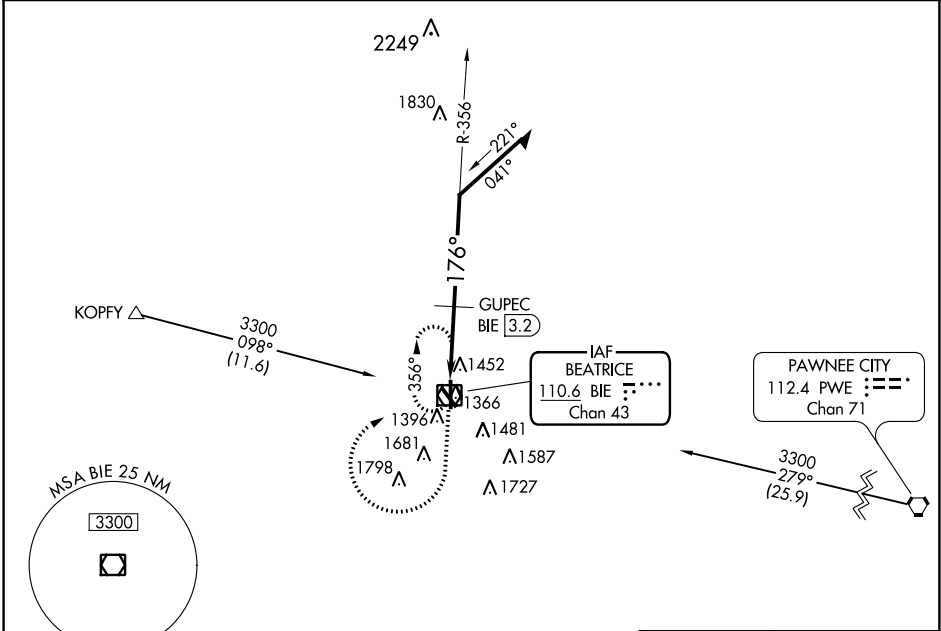
VOR RWY 18

BEATRICE MUNI (BIE)

⚠ Helicopter visibility reduction below 3/4 SM NA. VDP NA with Lincoln altimeter setting. Cat D straight-in minimums NA when using Lincoln altimeter setting. When local altimeter setting not received, use Lincoln altimeter setting and increase all MDA 100 feet. Increase GUPEC fix minimums S-18 Cat C/D visibility 1/4 mile and Circling Cat D 1/2 mile.

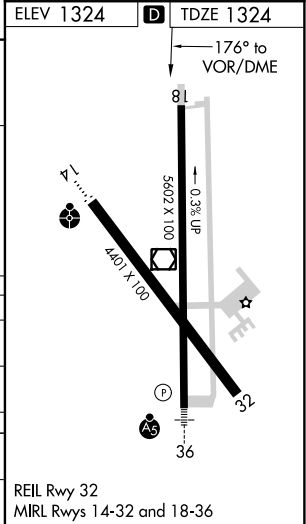
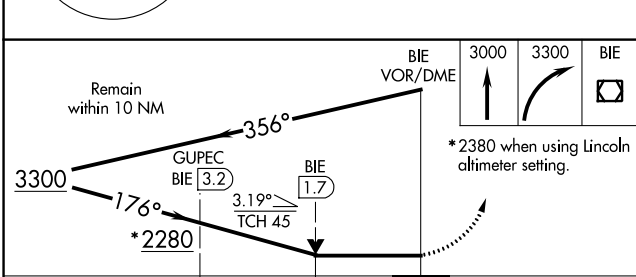
MISSED APPROACH: Climb to 3000 then climbing right turn to 3300 direct BIE VOR/DME and hold.

AWOS-3 125.325	MINNEAPOLIS CENTER 126.4 317.7	COLUMBUS RADIO 122.5	UNICOM 122.8 (CTAF) 0
--------------------------	--	--------------------------------	--



NC-2, 09 NOV 2017 to 07 DEC 2017

NC-2, 09 NOV 2017 to 07 DEC 2017



CATEGORY	A	B	C	D
S-18	2280-1 1/4 956 (1000-1 1/4)	2280-1 1/2 956 (1000-1 1/2)	2280-3	956 (1000-3)
CIRCLING	2280-1 1/4 956 (1000-1 1/4)	2280-1 1/2 956 (1000-1 1/2)	2280-3	956 (1000-3)
GUPEC FIX MINIMUMS				
S-18	1760-1	436 (500-1)	1760-1 1/4	436 (500-1 1/4)
CIRCLING	1820-1	496 (500-1)	1820-1 1/2 496 (500-1 1/2)	2060-2 1/4 736 (800-2 1/4)