

WAAS CH <b>42920</b> <b>W18A</b>	APP CRS <b>176°</b>	Rwy Idg TDZE Apt Elev	<b>5602</b> <b>1324</b> <b>1324</b>
--	------------------------	-----------------------------	---

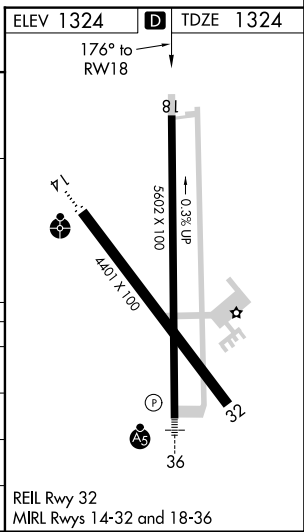
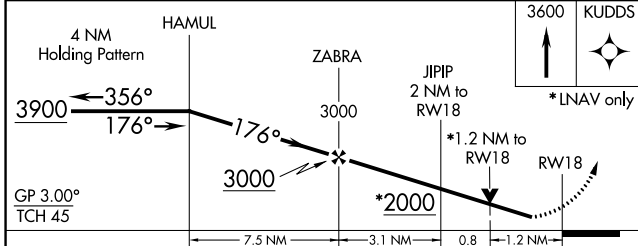
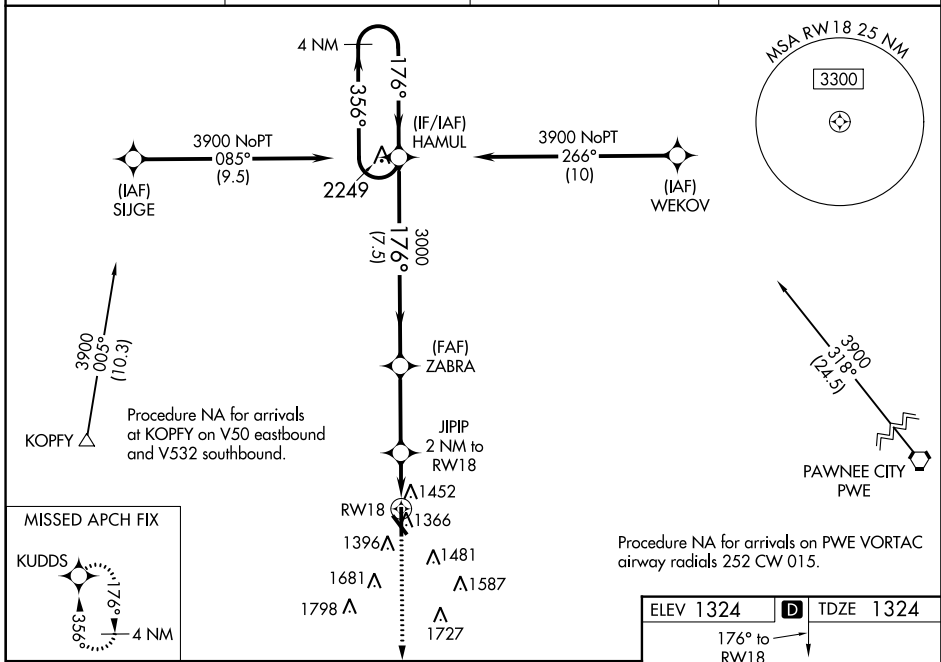
# RNAV (GPS) RWY 18

BEATRICE MUNI (BIE)

**⚠** Baro-VNAV NA when using Lincoln altimeter setting. For uncompensated Baro-VNAV systems, LNAV/VNAV NA below -17°C (2°F) or above 35°C (95°F). DME/DME RNP-0.3 NA.  
**⚠** Helicopter visibility reduction below 3/4 SM NA. VDP NA with Lincoln altimeter setting. When local altimeter setting not received, use Lincoln altimeter setting and increase all DA 91 feet and all MDA 100 feet. Increase LPV and LNAV/VNAV all Cats visibility 3/8 mile, LNAV Cat C/D visibility 1/4 mile, and Circling Cat D visibility 1/2 mile.

**MISSED APPROACH:**  
Climb to 3600 direct KUDDUS and hold.

AWOS-3 <b>125.325</b>	MINNEAPOLIS CENTER <b>126.4 317.7</b>	COLUMBUS RADIO <b>122.5</b>	UNICOM <b>122.8 (CTAF)</b> <b>📻</b>
--------------------------	--	--------------------------------	--



CATEGORY	A	B	C	D
LPV DA		1574-3/4	250 (300-3/4)	
LNAV/VNAV DA		1663-1 1/8	339 (400-1 1/8)	
LNAV MDA	1760-1	436 (500-1)	1760-1 1/4	436 (500-1 1/4)
CIRCLING	1820-1	496 (500-1)	1820-1 1/2	2060-2 1/4
			496 (500-1 1/2)	736 (800-2 1/4)

NC-2, 09 NOV 2017 to 07 DEC 2017

NC-2, 09 NOV 2017 to 07 DEC 2017