


WAAS CH 69620 W14A	APP CRS 139°	Rwy Idg TDZE Apt Elev	4401 1319 1324
----------------------------------------	------------------------	-----------------------------	-------------------------------------------

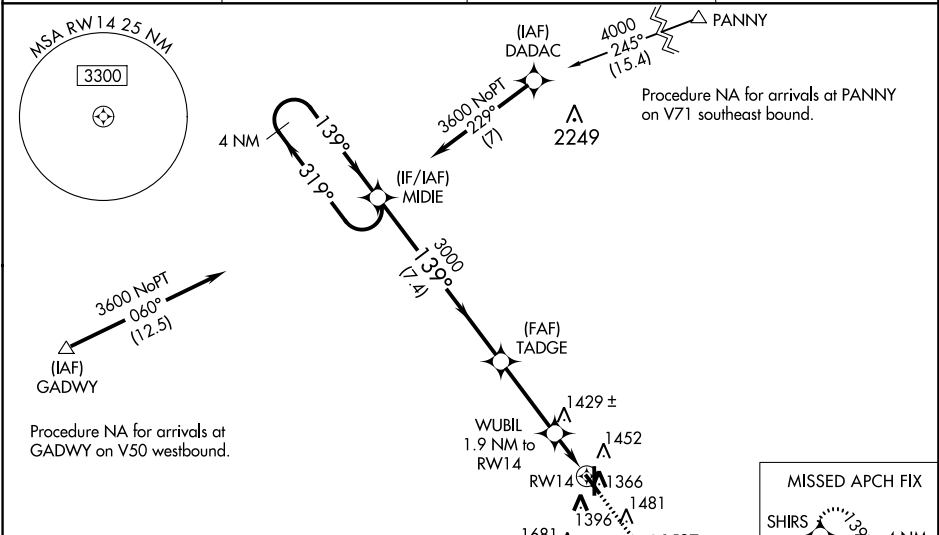
RNAV (GPS) RWY 14

BEATRICE MUNI (BIE)

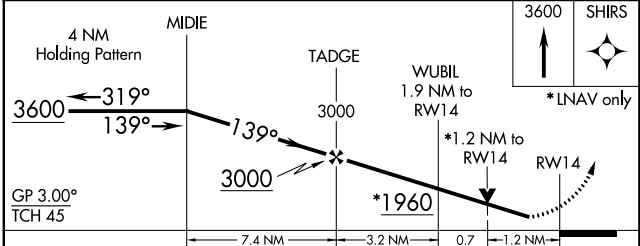
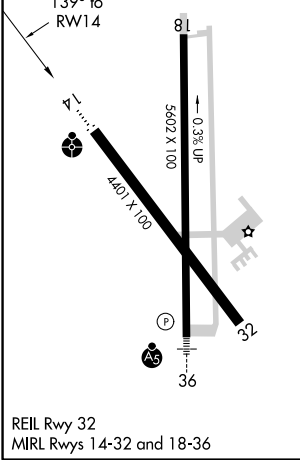
⚠ Inoperative table does not apply to LPV, LNAV/VNAV and LNAV Cat A/B. For inop ODALS, increase LNAV Cat D visibility to 1 1/8 mile. Baro-VNAV NA when using Lincoln altimeter setting. For uncompensated Baro-VNAV systems, LNAV/VNAV NA below -17°C (2°F) or above 35°C (95°F). For inop ODALS when using Lincoln altimeter setting, increase LPV, LNAV/VNAV visibility to 1 1/8 mile and LNAV Cat D to 1 1/8 mile. DME/DME RNP-0.3 NA. VDP NA with Lincoln altimeter setting. When local altimeter setting not received, use Lincoln altimeter setting: increase LPV and LNAV/VNAV DA to 1660 feet; increase all MDA 100 feet and visibility LNAV Cats C/D 1/4 mile, Circling Cat C 1/8 mile and Cat D 1/2 mile. When using Lincoln altimeter setting, inoperative table does not apply to LNAV Cats A and B.

ODALS

MISSED APPROACH:
 Climb to 3600 direct SHIRS and hold.

AWOS-3 125.325	MINNEAPOLIS CENTER 126.4 317.7	COLUMBUS RADIO 122.5	UNICOM 122.8 (CTAF) 
--------------------------	------------------------------------------	--------------------------------	-----------------------------------------------------------------------------------------------------------------



ELEV 1324	D	TDZE 1319
-----------	----------	-----------



CATEGORY	A	B	C	D
LPV DA		1569-1	250 (300-1)	
LNAV/VNAV DA		1569-1	250 (300-1)	
LNAV MDA	1760-1	441 (500-1)	1760-1 1/8	441 (500-1 1/8)
CIRCLING	1820-1	496 (500-1)	1820-1 1/2 496 (500-1 1/2)	2060-2 1/4 736 (800-2 1/4)

NC-2: 09 NOV 2017 to 07 DEC 2017

NC-2: 09 NOV 2017 to 07 DEC 2017