

(CAPKO.RAVNN6) 17229

AL-804 (FAA)

RAVNN SIX ARRIVAL (RNAV) Arrival Routes

BALTIMORE, MARYLAND

POTOMAC APP CON

128.35 270.275

BALTIMORE WASHINGTON INTL ATIS

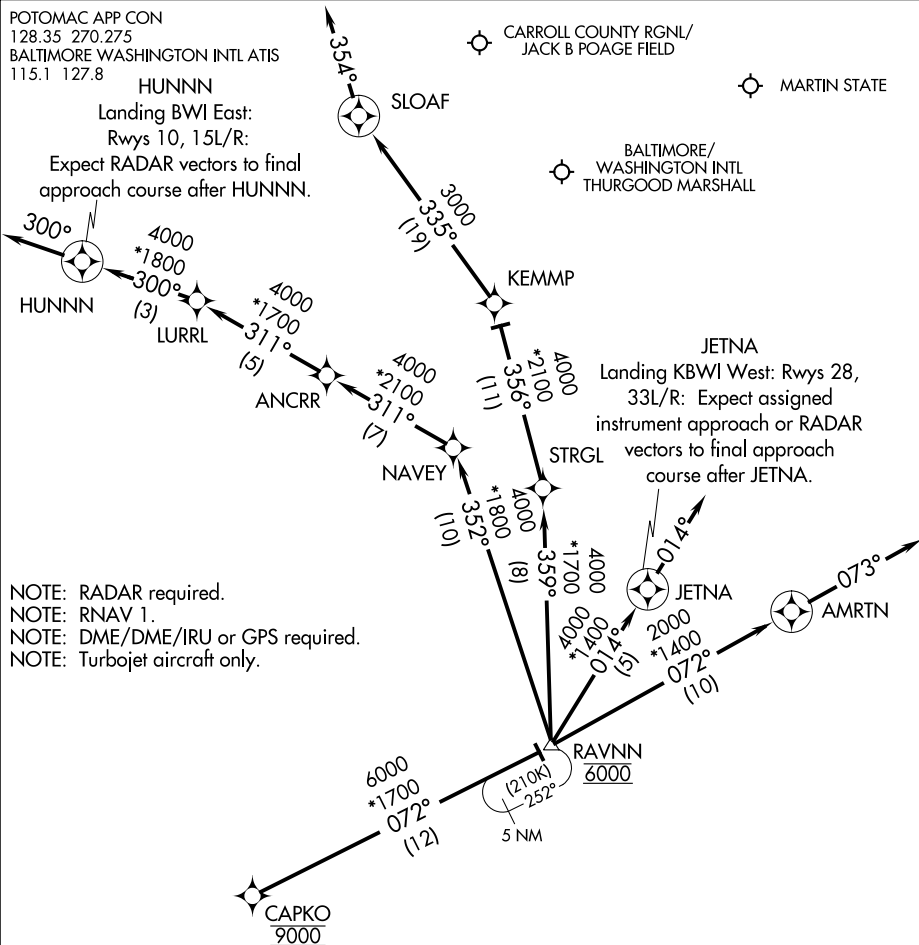
115.1 127.8

HUNNN

Landing BWI East:

Rwys 10, 15L/R:

Expect RADAR vectors to final approach course after HUNNN.



NOTE: RADAR required.

NOTE: RNAV 1.

NOTE: DME/DME/IRU or GPS required.

NOTE: Turbopjet aircraft only.

NOTE: Chart not to scale.

ARRIVAL ROUTE DESCRIPTION

From CAPKO on track 072° to cross RAVNN at 6000.

LANDING BWI RUNWAYS 10, 15L/R: From RAVNN on track 352° to NAVFY, then on track 311° to ANCRR, then on track 311° to LURRL, then on track 300° to HUNNN, then on track 300°.

Expect RADAR vectors to final approach course.

LANDING BWI RUNWAYS 28, 33L/R: From RAVNN on track 014° to JETNA, then on track 014°.

Expect assigned instrument approach or RADAR vectors to final approach course.

LANDING DMW: From CAPKO on track 072° to cross RAVNN at 6000, then on track 359° to STRGL, then on track 356° to KEMMP, then on track 335° to SLOAF, then on heading 354°.

Expect RADAR vectors to final approach course.

LANDING MTN: From CAPKO on track 072° to cross RAVNN at 6000, then on track 072° to AMRTN, then on track 073°. Expect RADAR vectors to final approach course.

RAVNN SIX ARRIVAL (RNAV) Arrival Routes

BALTIMORE, MARYLAND

(CAPKO.RAVNN6) 10DEC15

NE-3, 09 NOV 2017 to 07 DEC 2017

NE-3, 09 NOV 2017 to 07 DEC 2017