

RAVNN SIX ARRIVAL (RNAV) Transition Routes

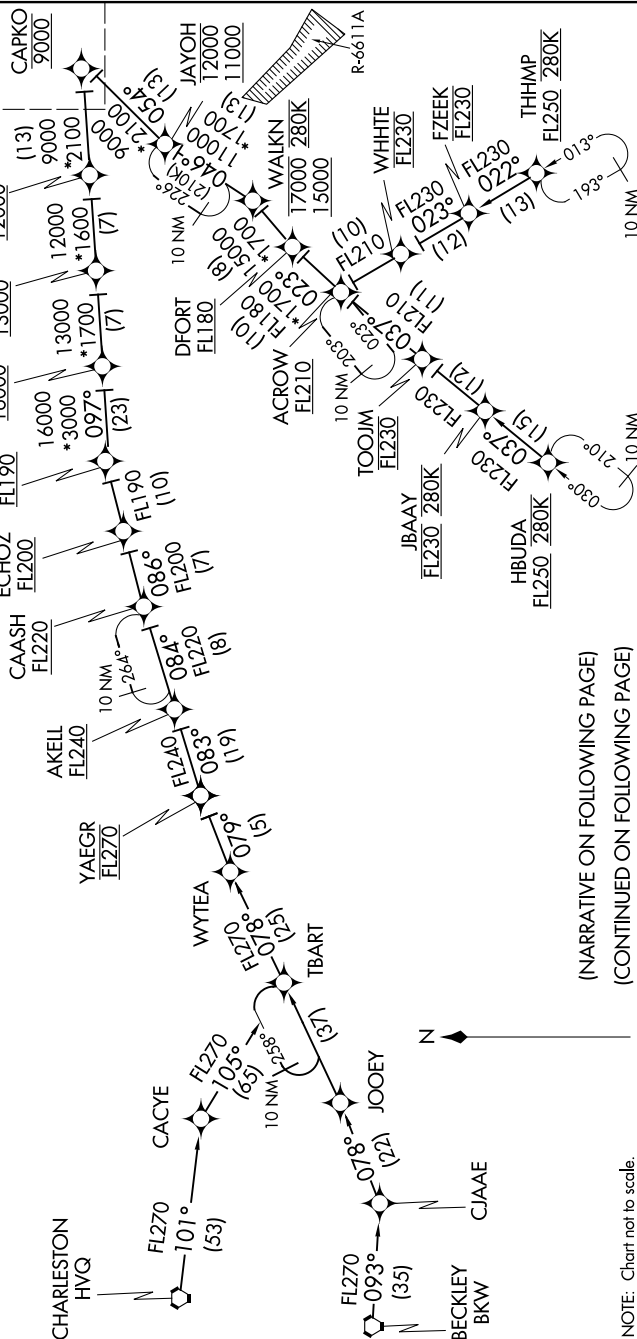
NE-3, 09 NOV 2017 to 07 DEC 2017

POTOMAC APP CON
128.35 270.275
BALTIMORE WASHINGTON INTL D-ATIS
115.1 127.8

NOTE: RADAR required.
NOTE: RNAV 1.
NOTE: DME/DME/IRU or GPS required.
NOTE: Turbojet aircraft only.
NOTE: All part 91, 101, 103, 105, 125, 133, 135, and 137 flight operations are prohibited on the HVQ/BKW/JOOEY transitions.

BECKLEY TRANSITION (BKW.RAVNN6)
CHARLESTON TRANSITION (HVQ.RAVNN6)
HBUDA TRANSITION (HBUDA.RAVNN6): (ATC assigned only).
JOOEY TRANSITION (JOOEY.RAVNN6): (ATC assigned only).
THHMP TRANSITION (THHMP.RAVNN6)

See following page for Arrival Routes.



(NARRATIVE ON FOLLOWING PAGE)
(CONTINUED ON FOLLOWING PAGE)

NE-3, 09 NOV 2017 to 07 DEC 2017

RAVNN SIX ARRIVAL (RNAV) Transition Routes

NOTE: Chart not to scale.