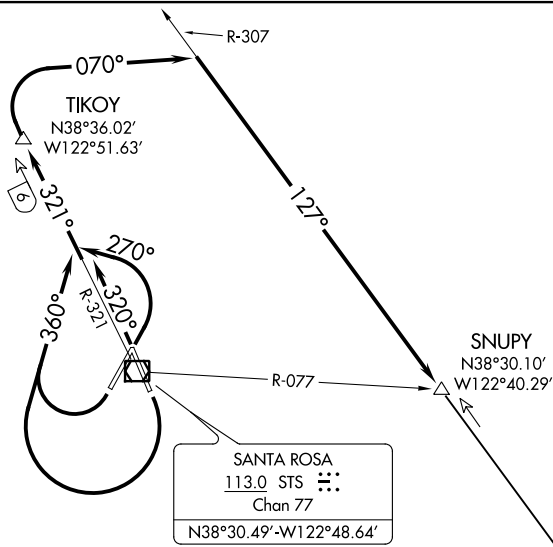


(STS8.SNUPY) 16091

# SANTA ROSA EIGHT DEPARTURE

CHARLES M SCHULZ-SONOMA COUNTY (STS)  
SL-696 (FAA) SANTA ROSA, CALIFORNIA

GND CON  
121.9  
SANTA ROSA TOWER ★  
118.5 363.0  
OAKLAND CENTER  
127.8 353.5



NOTE: DME required.

### TAKEOFF MINIMUMS

- Rwy 2: Standard with minimum climb of 281' per NM to 3900.
- Rwy 14: Standard with minimum climb of 298' per NM to 2400.
- Rwy 20: Standard with minimum climb of 408' per NM to 2800.
- Rwy 32: Standard with minimum climb of 281' per NM to 2700.

(NOTES CONTINUED ON FOLLOWING PAGE)

NOTE: Chart not to scale.

### DEPARTURE ROUTE DESCRIPTION

- TAKEOFF RUNWAY 2: Climbing left turn heading 270°, thence . . . .
- TAKEOFF RUNWAYS 14 and 20: Climbing right turn heading 360°, thence . . . .
- TAKEOFF RUNWAY 32: Climb on heading 320°, thence . . . .

. . . . intercept and climb on STS R-321 to TIKOY/6 DME, then turn right heading 070° to intercept SGD R-307 to SNUPY INT/SGD 24 DME, then on (transition).

SCAGGS ISLAND TRANSITION (STS8.SGD): From over SNUPY INT/SGD 24 DME on SGD R-307 to SGD VORTAC.

# SANTA ROSA EIGHT DEPARTURE

(STS8.SNUPY) 13NOV14

SANTA ROSA, CALIFORNIA  
CHARLES M SCHULZ-SONOMA COUNTY (STS)

SW-2, 09 NOV 2017 to 07 DEC 2017

SW-2, 09 NOV 2017 to 07 DEC 2017