

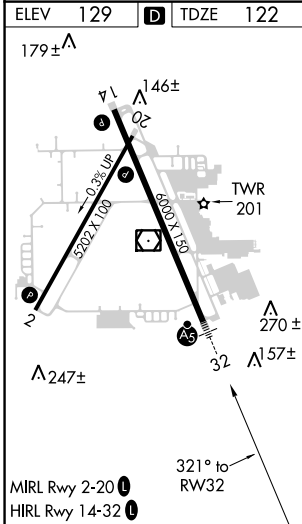
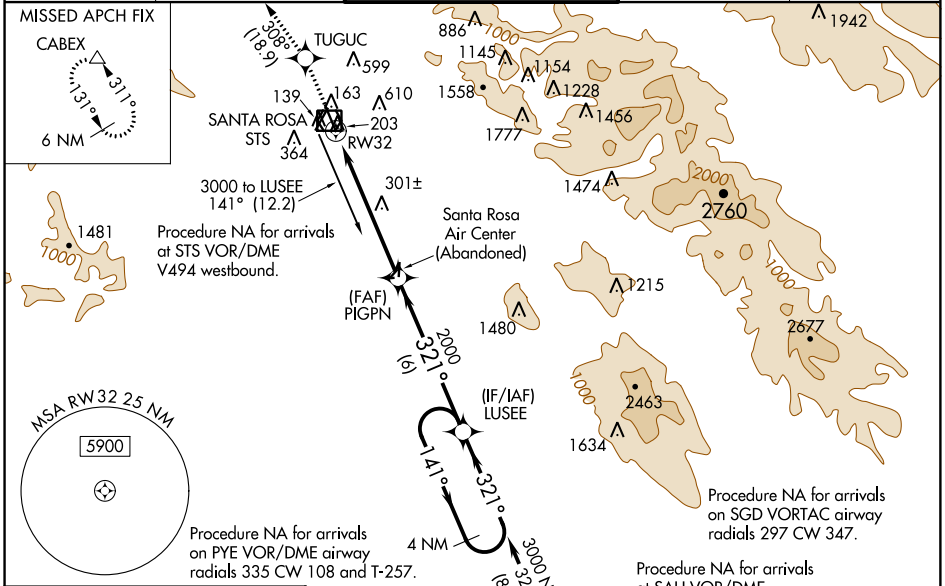
WAAS CH 72611 W32A	APP CRS 321°	Rwy Ldg 6000 TDZE 122 Apt Elev 129
--	------------------------	---

RNAV (GPS) RWY 32

CHARLES M SCHULZ-SONOMA COUNTY (STS)

<p>For uncompensated Baro-VNAV systems, LNAV/VNAV NA below -4°C (25°F) or above 54°C (130°F). DME/DME RNP-0.3 NA. When local altimeter setting not received use Petaluma altimeter setting: Increase all DA 47 feet, all MDA 60 feet, increase LPV, LNAV/VNAV and LNAV Cat C/D visibilities ¾ mile. Baro-VNAV and VDP NA when using Petaluma altimeter setting. # RVR 1800 authorized with use of FD or AP or HUD to DA.</p>	<p>MALSR</p>	<p>MISSED APPROACH: Climb to 6000 direct TUGUC and on track 308° to CABEX and hold, continue climb-in-hold to 6000.</p>

ATIS 120.55	OAKLAND CENTER 127.8 353.5	SANTA ROSA TOWER* 118.5 (CTAF) 0 363.0	GND CON 121.9	UNICOM 122.95
-----------------------	--------------------------------------	--	-------------------------	-------------------------



6000	TUGUC	tr 308°	CABEX	LUSEE	4 NM Holding Pattern
					141° → 3000
					← 321°
* LNAV only. PIGPN 2000					
* 1.2 NM to RW32					
GP 3.00° TCH 53					
CATEGORY	A	B	C	D	
LPV DA #		322/24	200 (200-½)		
LNAV/VNAV DA		570/50	448 (500-1)		
LNAV MDA	560/24	438 (500-½)	560/40	438 (500-¾)	
CIRCLING	600-1	680-1	1080-3	1420-3	
	471 (500-1)	551 (600-1)	951 (1000-3)	1291 (1300-3)	

SW-2. 09 NOV 2017 to 07 DEC 2017

SW-2. 09 NOV 2017 to 07 DEC 2017