

APP CRS	Rwy Idg	5880
126°	TDZE	122
	Apt Elev	129

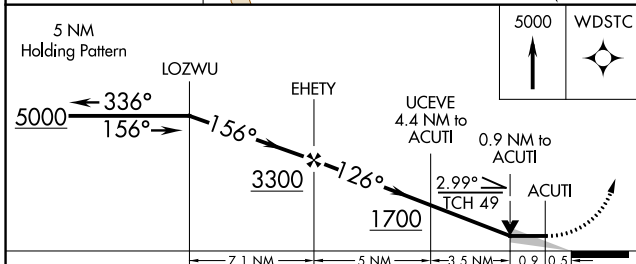
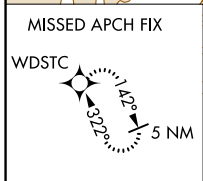
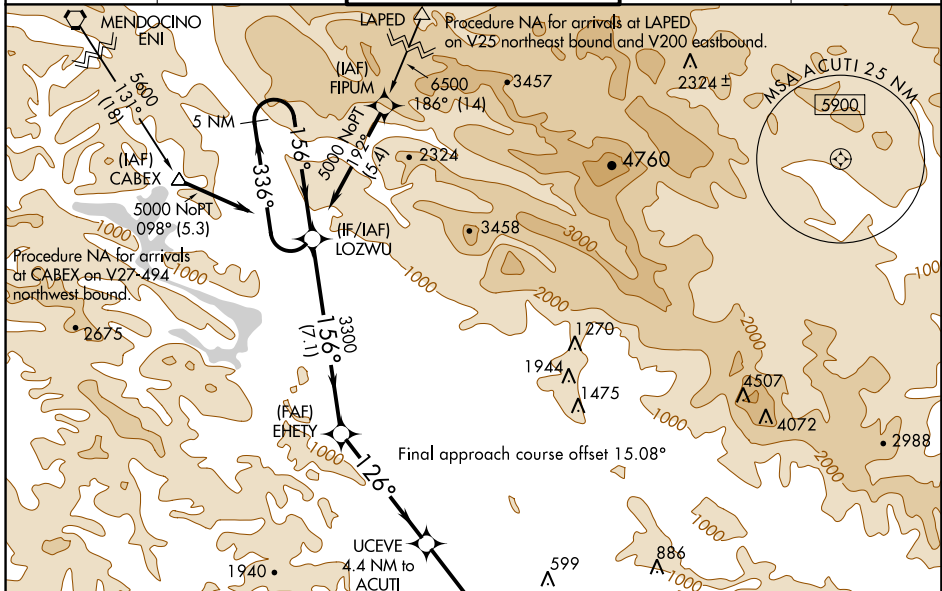
RNAV (GPS) RWY 14

CHARLES M SCHULZ-SONOMA COUNTY (STS)

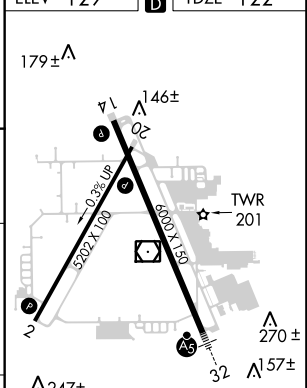
▽ DME/DME RNP-0.3 NA. When local altimeter setting not received, use Petaluma altimeter setting and increase all MDA 60 feet and increase LNAV visibility Cat C and D ¼ mile.

▲ MISSED APPROACH: Climb to 5000 direct WDSTC and hold, continue climb-in-hold to 5000.

ATIS 120.55	OAKLAND CENTER 127.8 353.5	SANTA ROSA TOWER* 118.5 (CTAF) 363.0	GND CON 121.9	UNICOM 122.95
-----------------------	--------------------------------------	--	-------------------------	-------------------------



ELEV 129	TDZE 122
----------	----------



CATEGORY	A	B	C	D
LNAV MDA	600-1	478 (500-1)	600-1 ³ / ₈	478 (500-1 ³ / ₈)
C CIRCLING	600-1 471 (500-1)	680-1 551 (600-1)	1080-3 951 (1000-3)	1420-3 1291 (1300-3)

MRL Rwy 2-20 **U**
HIRL Rwy 14-32 **U**

SW-2. 09 NOV 2017 to 07 DEC 2017

SW-2. 09 NOV 2017 to 07 DEC 2017