

LOC I-STS 109.3	APP CRS 321°	Rwy Idg TDZE Apt Elev	6000 122 129
---------------------------	------------------------	-----------------------------	---

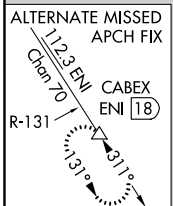
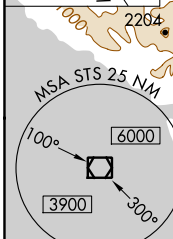
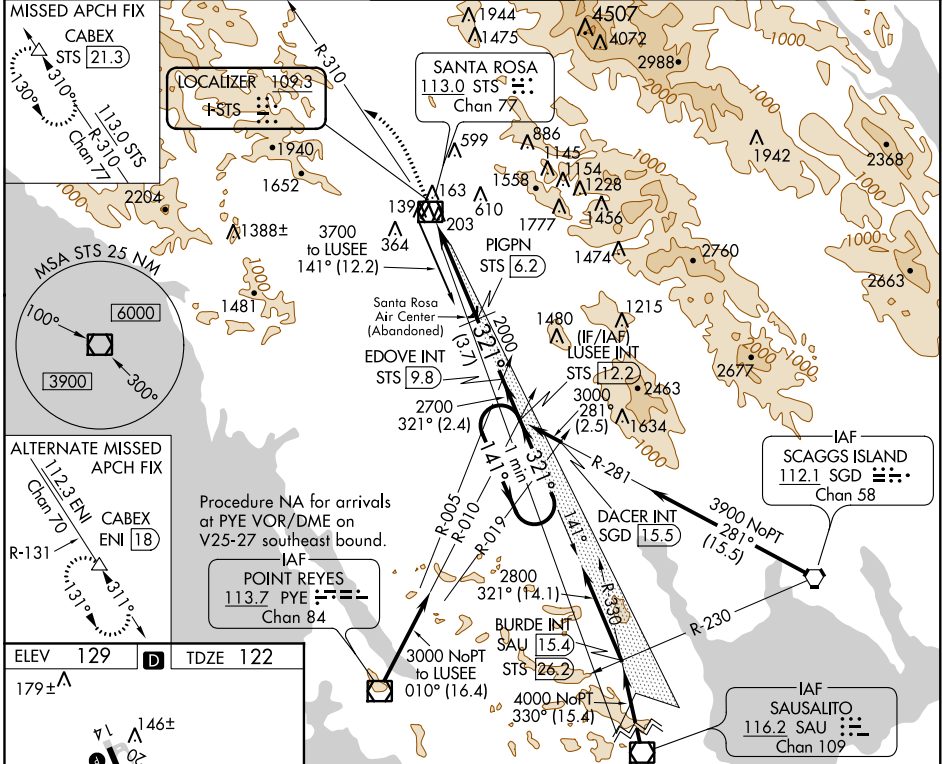
ILS or LOC/DME RWY 32

CHARLES M. SCHULZ-SONOMA COUNTY (STS)

DME required. When local altimeter setting not received, use Petaluma altimeter setting and increase all DA to 423 feet and all MDA 40 feet, and S-LOC 32 visibility Cats C and D ½ mile.

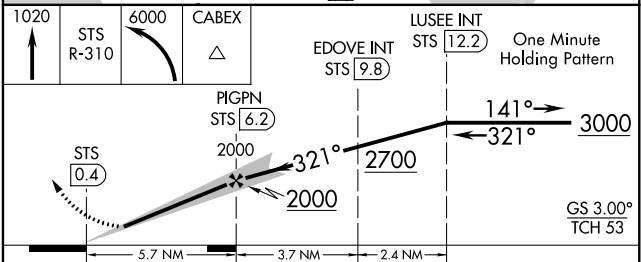
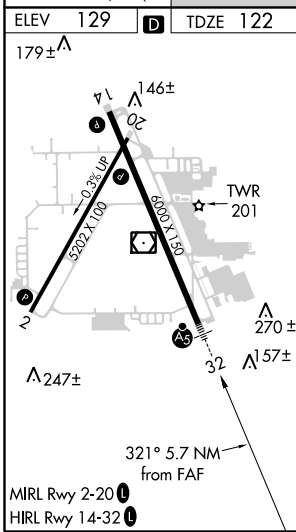
MALSR MISSED APPROACH: Climb to 1020 on STS VOR/DME R-310 and climbing left turn to 6000 to CABEX/STS 21.3 DME and hold, continue climb-in-hold to 6000.

ATIS 120.55	OAKLAND CENTER 127.8 353.5	SANTA ROSA TOWER* 118.5 (CTAF) 0 363.0	GND CON 121.9	UNICOM 122.95
-----------------------	--------------------------------------	--	-------------------------	-------------------------



Procedure NA for arrivals at PYE VOR/DME on V25-27 southeast bound.

IAF
POINT REYES
113.7 PYE
Chan 84



CATEGORY	A	B	C	D
S-ILS 32	377/24 255 (300-½)			
S-LOC 32	580/24	458 (500-½)	580/45	458 (500-¾)
C CIRCLING	600-1 471 (500-1)	680-1 551 (600-1)	1080-3 951 (1000-3)	1420-3 1291 (1300-3)

SW-2, 09 NOV 2017 to 07 DEC 2017

SW-2, 09 NOV 2017 to 07 DEC 2017