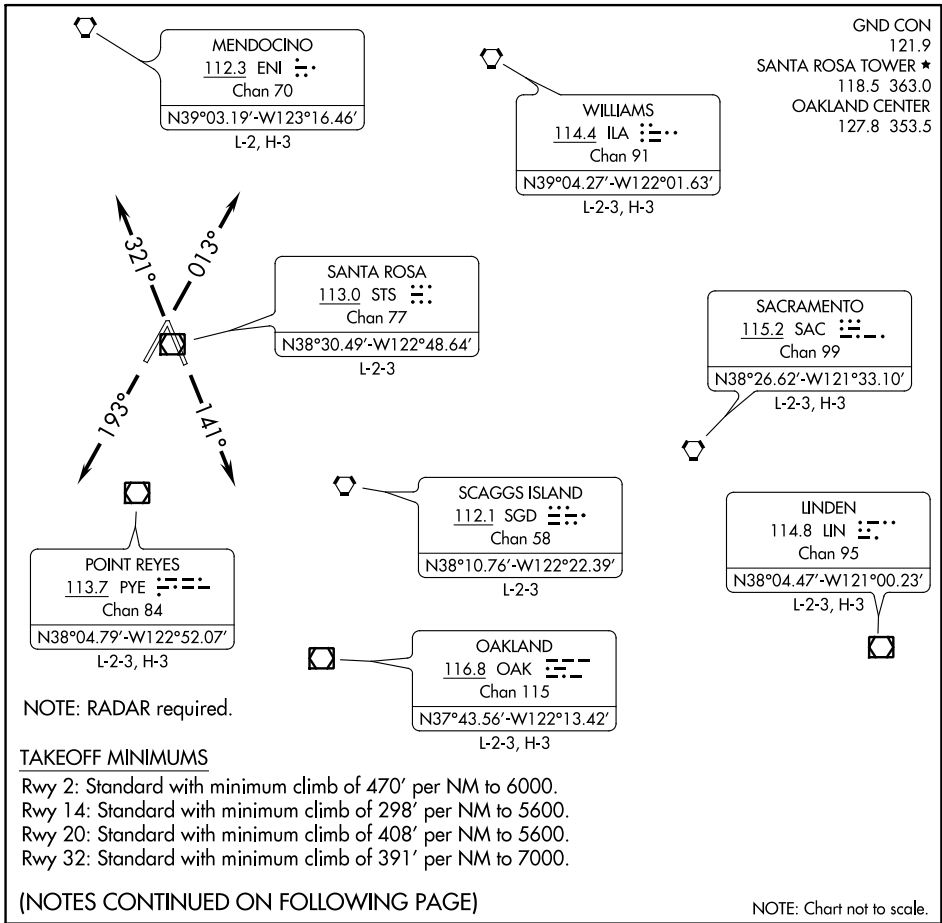


CHARLIE FIVE DEPARTURE



SW-2. 09 NOV 2017 to 07 DEC 2017

SW-2. 09 NOV 2017 to 07 DEC 2017

DEPARTURE ROUTE DESCRIPTION

TAKEOFF RUNWAY 2: Climb heading 013° (or assigned heading 295° CW 325° or 130° CW 190°), thence

TAKEOFF RUNWAY 14: Climb heading 141° (or assigned heading 295° CW 320° or 130° CW 220°), thence

TAKEOFF RUNWAY 20: Climb heading 193° (or assigned heading 295° CW 325° or 130° CW 220°), thence

TAKEOFF RUNWAY 32: Climb heading 321° (or assigned heading 295° CW 325° or 141° CW 220°), thence

. . . . expect RADAR vectors to join assigned route. Maintain assigned altitude; expect filed altitude/flight level ten minutes after departure.

LOST COMMUNICATIONS: If not in contact with Oakland Center after reaching 4000, proceed direct to the PYE VOR/DME. Thence via assigned route.