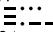
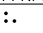
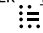


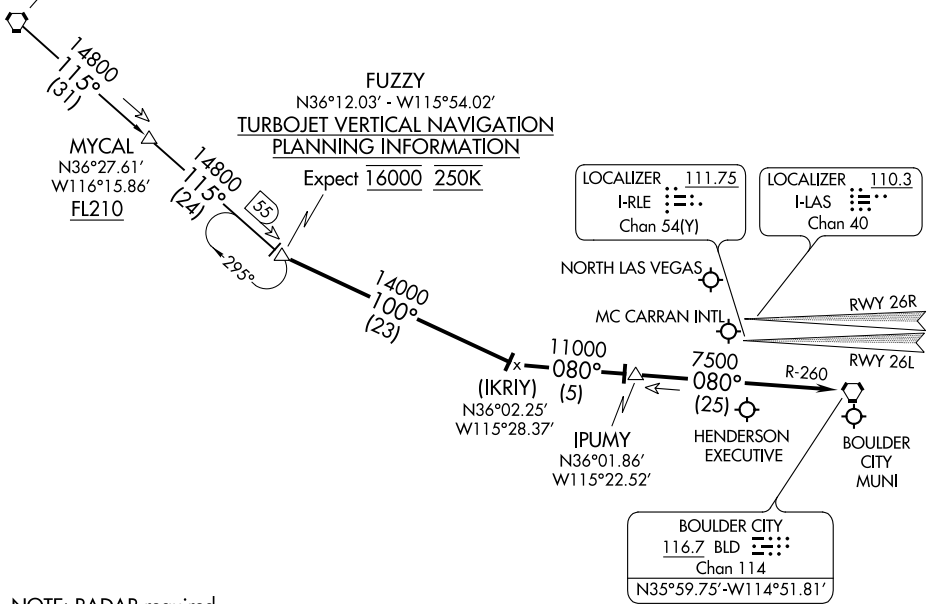
LAS VEGAS APP CON  
 125.025 379.15  
 LAS VEGAS TOWER  
 118.75 257.8 (Rwy 1L/19R, 1R/19L)  
 119.9 257.8 (Rwy 8L/26R, 8R/26L)  
 NORTH LAS VEGAS TOWER\*  
 125.7 360.75  
 LAS VEGAS D-ATIS  
 132.4  
 NORTH LAS VEGAS ATIS  
 118.05

BEATTY  
 114.7 BTY   
 Chan 94  
 N36°48.04'-W116°44.86'  
 L-9, H-4

FUZZY  
 N36°12.03' - W115°54.02'  
**TURBOJET VERTICAL NAVIGATION  
 PLANNING INFORMATION**  
 Expect 16000 250K

LOCALIZER 111.75  
 I-RLE   
 Chan 54(Y)

LOCALIZER 110.3  
 I-LAS   
 Chan 40



SW-4, 09 NOV 2017 to 07 DEC 2017

SW-4, 09 NOV 2017 to 07 DEC 2017

NOTE: RADAR required.  
 NOTE: DME required.  
 NOTE: Chart not to scale.

ARRIVAL ROUTE DESCRIPTION

BEATTY TRANSITION (BTY.FUZZY8): From over BTY VORTAC on BTY R-115 to FUZZY. Thence . . .

. . . From over FUZZY via heading 100° to intercept BLD R-260 to BLD VORTAC.

LANDING LAS RUNWAYS 1L/R, 8L/R, and 19L/R: Expect RADAR vectors for visual approach prior to BLD VORTAC.

LANDING LAS RUNWAYS 26L/R: Expect ILS approach.

LANDING VGT, HND, BVU: Then after IPUMY, expect RADAR vectors to airport.