

WAAS Ch <b>82299</b> <b>W29A</b>	APP CRS <b>289°</b>	Rwy Idg TDZE Apt Elev	<b>7001</b> <b>990</b> <b>1009</b>
--	------------------------	-----------------------------	--

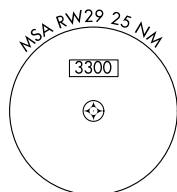
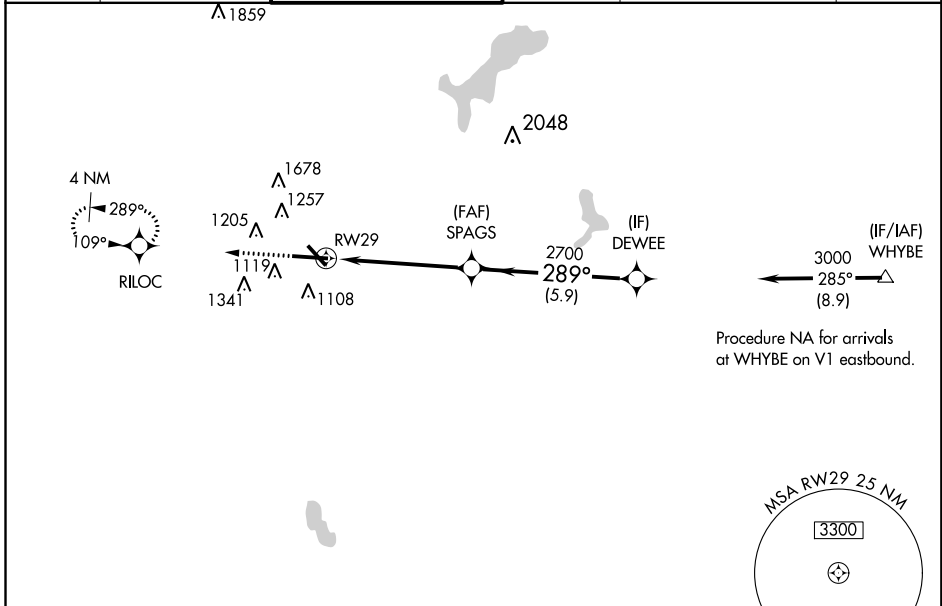
# RNAV (GPS) RWY 29

WORCESTER RGNL (ORH)

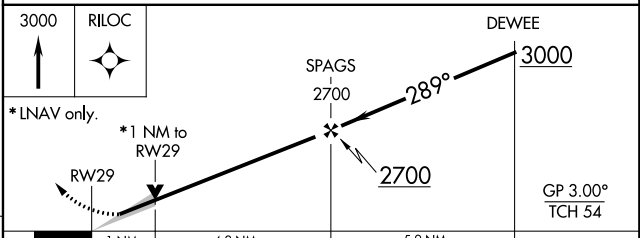
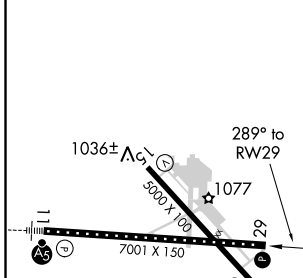
**▽** For uncompensated Baro-VNAV systems, LNAV/VNAV NA below -20°C (-4°F) or above 54°C (130°F).  
**△** DME/DME RNP -0.3 NA.

MISSED APPROACH: Climb to 3000 direct RILOC and hold.

ATIS <b>126.55</b>	BRADLEY APP CON <b>119.0 327.1</b>	WORCESTER TOWER★ <b>120.5 (CTAF) 0 263.0</b>	GND CON <b>123.85</b>	CLNC DEL <b>128.65</b> <b>119.0</b> (when tower closed)	UNICOM <b>122.95</b>
-----------------------	---------------------------------------	---	--------------------------	---	-------------------------



ELEV 1009	<b>D</b>	TDZE 990
-----------	----------	----------



CATEGORY	A	B	C	D
LPV DA		1190/50	200 (200-1)	
LNAV/VNAV DA		1261/50	271 (300-1)	
LNAV MDA		1360/55	370 (400-1¼)	
<b>C</b> CIRCLING	1560-1 551 (600-1)	1720-1 711 (800-1)	2000-3	991 (1000-3)

TDZ/CL Rwy 11  
 REIL Rwy 15, 29 and 33  
 HIRL Rwy 11-29  
 MIRL Rwy 15-33

NE-1, 09 NOV 2017 to 07 DEC 2017

NE-1, 09 NOV 2017 to 07 DEC 2017