

WAAS CH 77999 W11A	APP CRS 109°	Rwy Idg TDZE Apt Elev	7001 980 1009
---------------------------------	------------------------	-----------------------------	--

RNAV (GPS) RWY 11

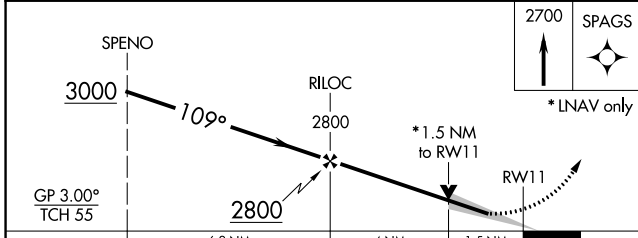
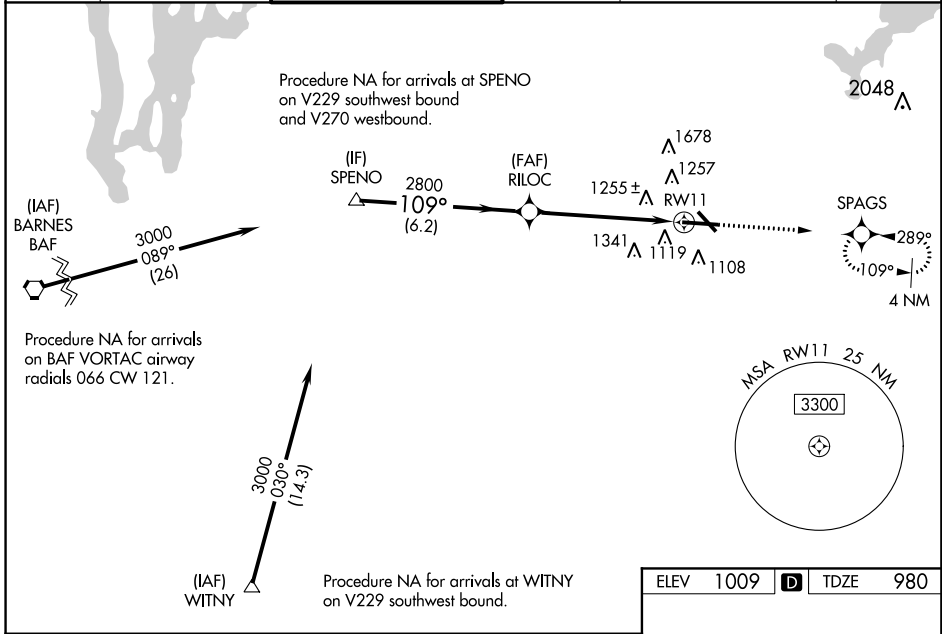
WORCESTER RGNL (ORH)

⚠ For uncompensated Baro-VNAV systems, LNAV/VNAV NA below -20°C (-4°F) or above 54°C (130°F).
DME/DME RNP-0.3 NA.
Inop table does not apply to LPV all Cats.
Inop table does not apply to LNAV Cats A/B.

MALSRL

MISSED APPROACH: Climb to 2700 direct SPAGS and hold, when authorized by ATC, continue climb-in-hold to 3000.

ATIS 126.55	BRADLEY APP CON 119.0 327.1	WORCESTER TOWER* 120.5 (CTAF) 263.0	GND CON 123.85	CLNC DEL 128.65 119.0 (when tower closed)	UNICOM 122.95
-----------------------	---------------------------------------	---	--------------------------	---	-------------------------



ELEV	1009	D	TDZE	980
------	------	----------	------	-----

1036± A5
3000 X 100
1077
1080 A
TWR 1100
109° to RWY 11

TDZ/CL Rwy 11
REIL Rws 15, 29, and 33
HIRL Rwy 11-29
MIRL Rwy 15-33

NE-1, 09 NOV 2017 to 07 DEC 2017

NE-1, 09 NOV 2017 to 07 DEC 2017